

**February
2026**
•
£1
where
sold

Bardfield Times

News and views from Great Bardfield and Little Bardfield



Ten editions of Bardfield Times are published each year by volunteers from Great Bardfield and Little Bardfield parishes. Articles, letters, etc. for inclusion need to be received by the editors by the **14th of the month prior to publication**. The management team reserve the right to refuse, postpone or edit any material received for publication. Views expressed in this magazine are not necessarily those of the management team.

Editor: Janet Dyson
drjanetdyson@gmail.com

Layout designer: Helen McGlynn
helenBTlayout@gmail.com

**Hand written letters
or articles for typing:** Alicia Holmes
Bunbury, Bridge Street, CM7 4SY

Advertising: Kate Fox 01371 810111
kateandianfox@btopenworld.com

Distribution: Ray Coles 07470 992224
Mike Brown 07977 929614
distribution@bardfieldtimes.com

Treasurer: Jackie Newton 01371 810586
treasurer@bardfieldtimes.com



Front cover: Winter Walk by Sheree Riley

Above: 'The Fair Maids of February'. Snowdrops by Doug Joyce

ARTISTS OF GREAT BARDFIELD Peter Keynton



I moved to Great Bardfield nearly 40 years ago but despite being interested in the history of Art I knew nothing about the Bardfield artists. My interest then focussed on the more Classical artists and the French impressionists. As an aspiring artist I had always enjoyed working with pastels and I also used oil paints but felt that watercolour was too difficult. However, after taking evening classes about 15 years ago I now enjoy the challenges they present. My experiences have given me an insight into how skilled Bawden and Ravilious were, although very different in their artistic styles. I have also produced lino cuts and cardboard cut work, used for the Town Hall picture above, entitled 'Wild night at the Town hall'. This technique has been used by Bardfield artist Sheila Robinson and also by Chloe Cheese. With the cardboard as well as cutting away you can add to the surface for other effects and textures. The annual Town Hall art sale continues the tradition of the Bardfield artists in the village. The growing success has been rewarding for me as an organiser and encouraging for other local artists. To be considered a Bardfield artist is humbling and I feel that the story of the original artists is a unique aspect of the history of Great Bardfield, setting it apart from other picturesque and historic places in North Essex.

Bardfield Cinema Club



Great Bardfield Town Hall



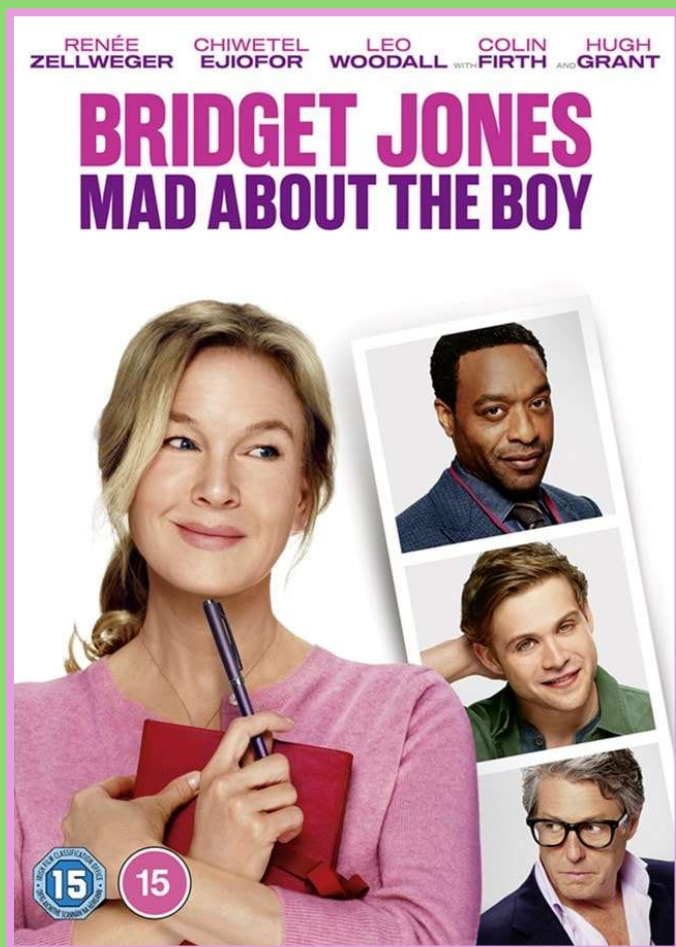
Doors Open 7.30pm

Film Starts 8.00pm

Members free

Non-members £7

Friday 6th February



Editorial

Our cover photo, 'Winter Walk', captures beautifully the atmosphere of a bright winter's day: white-frosted leaves crunching underfoot, bare tree branches silhouetted against a soft blue sky, the afternoon sunlight casting long shadows of the warmly wrapped walkers on the path. It gives a feeling that Spring may not be far away. With Spring in mind the Poetry Group is hosting an event for poet Kevin Crossley-Holland who will read and discuss his new collection, *Spring*, on Feb.21st (See p. 23). Here's one of his poems:

Spring Fever

*Spring-loading, springboard
spring-watch, spring flood ...
Wings thrashing
in a quiet wood
Even if I could I would not
tame my whirling blood.*

We are sorry to be losing one of our long-serving members of the BT Team - Anna Bass. Anna has been a contributor and distributor of the BT for the last 15 years and, together with Ray, set up and monitored the Community Facebook. Now, after 20 years in Bardfield, Anna and Ray are moving to Poole to live in the house where she was born. We thank them both for their contributions to village life and wish them happiness in the future.

Last month we began a new series of articles on the inside back cover featuring some of the many artists of Great Bardfield, past and present, amateur and professional. In this issue Peter Keynton, one of the organisers of the Annual Art Show, shares his enjoyment of art and his love of Great Bardfield. In Nature Notes (p.16) Mac Beanland laments the disappearance of many once common birds from his garden. Is this something you've noticed? Could the culprits, as Mac suggests, be the red kites? What do you think?

We are sad to report that Alan Jordan of Great Lodge has died peacefully at home at the age of 95. A memorial service will be held in Shalford Church on February 13th at 11am and afterwards at Park House.

Janet Dyson
Editor

Great Bardfield Primary School

As we settle into the Spring Term here at school, the busy excitement of December already feels distant. In the lead-up to Christmas, there were many moments that made us incredibly proud. Our youngest children performed a joyful and confident Nativity, while our Key Stage 2 pupils filled St Mary's Church with their wonderful singing at the Carol Concert. We were very grateful to Father Alex, who accompanied the children on piano and organ and generously gave his time to rehearse and perform with them, helping to make the evening such a special occasion for families and friends.



Aldridge Class enjoying our new play trail

We also enjoyed welcoming senior members of the community to our Carols and Mince Pies afternoon. It was lovely to see how much our visitors enjoyed the performances, and the children received many kind and encouraging comments, especially about the mince

pies! Events like these are a reminder of the strong and supportive links between the school and the village, and I would like to thank everyone who helped make them so successful.



Aldridge class enjoying our new play trail

Our Christmas pantomime visit to the Town Hall has quickly become a firm favourite. Once again, it was expertly organised by our PTA and thoroughly enjoyed by both pupils and staff. December also brought a host of festive activities, including making Christingles at the church, Shop 'til You Drop, writing letters to Father Christmas, class parties and plenty of seasonal fun. By the end of term, the children were full of excitement and festive cheer.

Last term was an extremely busy one, particularly for our hardworking PTA. I would like to extend a heartfelt thank you to everyone involved for their amazing fundraising efforts towards our new play trail. Their time, energy and commitment have been exceptional. I would also like to thank the school and village community for the generous donations which helped us reach our

goal. The encouragement and goodwill shown throughout the campaign has been truly appreciated and will have a lasting impact on the children for years to come.

The Spring Term is an industrious time when children settle back into routines and focus on making progress in their learning. We will be holding our usual learning review meetings and sharing mid-year reports with parents over the coming weeks. Getting to know every child as an individual remains at the heart of what we do at Great Bardfield Primary School.

As we move through the winter months and look ahead to Easter, we are all hoping that snow - and the disruption it can bring - keeps its distance. Instead, we look forward to lighter days and the first signs that spring is on its way.

Liz Crow
Headteacher

Community Pavilion

Suitable for:

- *Children's parties (adjacent to safe children's area)*
- *Exercise groups*
- *Meetings*
- *Musical group rehearsals*

.....and many, many more.....

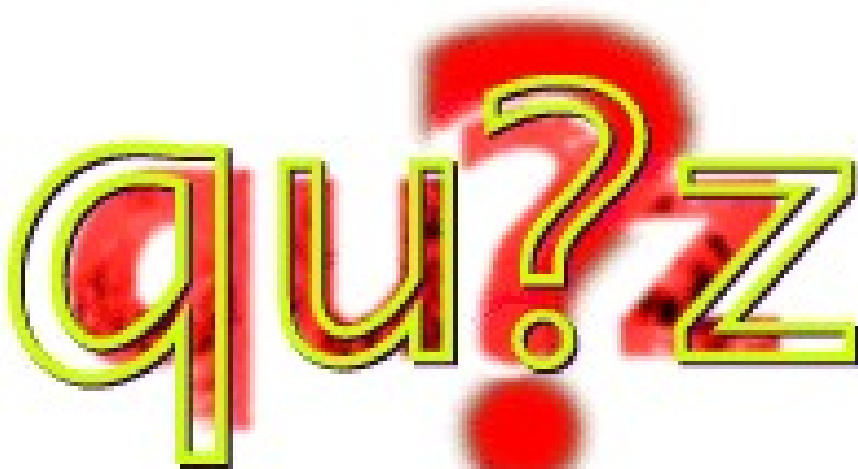
Facilities include:

- *Fully heated*
- *Small kitchen facilities*
- *Tables and chairs*
- *Toilets and washing facilities*
- *Plenty of parking, with easy access.*

For details of hiring including hiring rates, or for a viewing, please contact Lily Purcell (caretaker) on 07808 079877

The Pavilion Committee

GREAT BARDFIELD TOWN HALL



SATURDAY 21ST MARCH

7.00 for 7.30 pm start

LICENSED BAR

TEAMS OF 8 MAX

£12 PER PERSON, INCLUDING SUPPER

PAYABLE IN ADVANCE BY

BACS, CHEQUE OR CASH

To book and for bank account details please contact:

Patricia on mrspwalsh@aol.com or 07971 627407

Please let us know of any dietary requirements

Great Bardfield Parish Council Report

December & January

The Fountain

A serious leak has been discovered affecting the supply of water to the Fountain in Brook Street. This Fountain is a listed structure, and the Parish Council understands how important it is to many residents, as well as its historical significance to the village. The Fountain was erected by Henry Smith, a local benefactor, in the 19th century, to provide clean water from a spring in the valley of the brook into the village. Work to the Victorian pipework will shortly be undertaken to identify and rectify the problem. The water may need to be temporarily stopped for this work, but we aim to get the fountain flowing again. This is an unexpected and significant expense for the Parish Council and will affect our budget for next year.

The Parish Council also agreed the structure of the Fountain itself is in need of restoration and the possibilities of grant funding would be explored.

Local Government Reorganisation

The Parish Council has responded to the recent consultation on the proposed options for new Unitary authorities favouring no particular option but stressing the importance of a Parish Council's role and good communications with any new body which will replace the current two-tier District Council and County Councils.

Essex County Council and Braintree District Council had proposed three unitary councils across Essex with the North comprising Braintree, Colchester, Tendring and Uttlesford. The Secretary of State is expected to make a decision in March.

Playground Repairs

The annual safety inspection has taken place. Some repairs are required to the play equipment, and these will be undertaken as soon as possible. Additional bark will also be supplied.

Planning Applications

Park Hall, Braintree Road – Substantial rebuild and renovation of an historic barn (part retrospective) and conversion into an annexe for leisure use, ancillary to the main dwelling.

The Parish Council did not object but agreed with the Historic Buildings Officer (HBO)'s requirement for some significant conditions to be met by the applicants to protect this barn.

Tree Work in the Conservation Area

The Old Vicarage, Braintree Road: No objections.

Neighbourhood Plan

The latest consultation on Great Bardfield's Neighbourhood Plan ended on 26th January. The next stage is for the Plan, all supporting documentation and responses to be reviewed by an independent examiner. Once this is completed the village will be invited to vote in a referendum to accept the Plan which will then have legal weight in planning application processes affecting Great Bardfield and surrounding areas (the whole parish).

Housing Needs Survey

Following on from the Housing Needs survey we undertook with support from the Rural Community Council of Essex a few months ago we now have the results. These will inform the PC whether it would benefit residents if a small-scale development of affordable housing for those with a local link to the village (like those at Castle Shot and Northampton Meadow) should be considered.

Highways

Following a recent site visit by members of Essex Highways when the Parish Council stressed the dreadful state of the pavements in the centre of the village, we were pleased to see markings had appeared in some of the worst areas recently. However, we have subsequently been informed that these are to do with forthcoming work by Anglian Water. We can only hope that their reinstatement following these works improves these surface areas.

Bin Collections – February 2026

Tuesday February 3rd	Grey Bin & Food Bin
Tuesday February 10th	Clear Recycling Sacks & Food Bin Green Bin (for subscribers only)
Tuesday February 17th	Grey Bin & Food Bin
Tuesday February 24th	Clear Recycling Sacks & Food Bin Green Bin (for subscribers only)

Next Parish Council Meetings

The next Parish Council meeting will be held at 7.00pm on Wednesday 11th February 2026, in the Committee Room at the Town Hall. Our meetings are open to the public. Please contact Kate Fox, Clerk, if you plan to attend on 810111 or by email at clerk@greatbardfield-pc.gov.uk.

Carolynne Ruffle
Chairperson

Bardfield Horticultural Society

Spring Show

Saturday 14th March

Great Bardfield Town Hall

2.30 – 4.30pm

**Classes for adults, children, flowers, domestic, floral art,
photographs and handicraft.**

The poster has a dark blue background. At the top, there are two stylized hands in a light orange color, one on the left and one on the right, holding up the poster. A string of small, glowing white lights is draped across the top. The title 'QUIZ NIGHT' is written in large, glowing yellow-outlined letters.

QUIZ NIGHT

SIP AND SPUD

**SATURDAY 21ST
FEBUARY**

- 7pm to 11pm -

£15 per person

(6 PEOPLE MAX PER TEAM)

£50 CASH PRIZE

Ticket price includes 1 Jacket potato per person

Fabulous variety of toppings included

To book tickets please email

GreatBardfieldPreSchool@outlook.com

BAR AVAILABLE • RAFFLE • MUSIC

Great Bardfield Town hall

Dunmow Road - CM7 4SA

All proceeds will go towards

Great Bardfield Pre School Charity number - 1000159

Horticultural Society

Despite the rather changeable weather we have had in January, there are signs of spring underway: the snowdrops and aconites are now in flower along with the hellebores - which are amazingly resilient together with the odd iris unguicularis. Several crocuses are beginning to show and daffodils are in bud; we've even had a few early flowers. Winter shrubs are in flower, such as viburnum, winter jasmine, winter sweet and Daphnes. Cornus mass seems a bit late this year - so still a lot to enjoy.



Ladies enjoying the Floral Art morning

Our Annual Floral Art morning took place in December in the Quaker Meeting House. The theme was "A Seasonal Table Decoration". Mandy Boon was on hand to demonstrate, giving lots of useful tips and guidance. The morning was a great success, enjoyed by all the participants (and the helpers). There were lots of lovely arrangements for people to take home and enjoy. Also, there was an excellent raffle with great prizes and homemade cakes, which were much appreciated.



More creations at the Floral Art morning

Spring Talk

Our first meeting in 2026 will be on **Saturday, February 28th** at 2.30pm in Bardfield Town Hall. This will be a talk entitled **"60 Must have Plants"** with our speaker Dr Andrew Ward, owner of Norwell Nursery and Gardens in the Midlands. Andrew trained as a plant breeder and

opened the nursery and gardens with his wife, Helen, over 30 years ago. The couple came to Norwell in 1994, it had always been Andrew's dream to start a nursery, and the south-facing, sloping two-acre field set behind a row of cottages in the pretty Nottinghamshire village offered great potential, despite heavy clay soil and brambles that needed clearing



Norwell Nursery and Gardens

before the rewards of growing plants could be enjoyed. The site also proved to be a potent frost pocket, "In the bitter winter of 2010, we had quite a shock, enduring five nights of -18°C and one of -20°C . That's cold enough to kill bone-hardy plants if they are growing in pots. As a result, we tell visitors that if a plant grows here, it will be hardy more or less anywhere in the UK."

It is a small nursery specialising in choice and unusual herbaceous perennials and alpiners. The nursery is based around a one acre "Plantsman's garden" which holds over 2,500 different varieties of plants. It has featured in many magazines including *Country Life*, *Gardens Illustrated* and the *RHS Magazine*. Dr Ward also holds the National Collection of hardy Chrysanthemums and Astartias. In 2025 the Royal Horticultural Society presented Andrew with the prestigious Alan Bloom award. He will be bringing plants for sale — so be prepared!

Tickets are available from Linda Prior (07969 184845) or Lynne Joyce (01371 810524) or by electronic payment-see below. £10 for members and £12 for non-members. This will include tea, coffee and homemade cakes. There will also be a raffle and a lucky ticket draw.

You can renew your membership or join BHS at this meeting if you haven't already done so. Annual Membership is £5.00 pp and has the benefits of reduced prices to our events.

Cash payments to Lynne Joyce 01371 810524

or

Electronic payment as follows:

Account name: Bardfield Horticultural Society

Sort code: 09 01 55 Account number: 02585706

Please put your surname and "membership" as the reference
or please add "Spring Talk" if for tickets

Spring Show

Our Spring Show will be held in the Town Hall on **Saturday, March 14th**. The 2026 schedules will be available at the end of January / beginning of February. We look forward to seeing all the spring flowers, bulbs, floral arrangements, domestic entries and photographs you have taken during the year, along with any handicrafts you have been creating over the winter months.

There are a range of classes for children to enter and the display of entries from the school always generates plenty of praise and comments. We have introduced a novice class in the Spring Show: 3 daffodils. So please see what you have available on the day and bring them along. There are also 2 novice classes in Summer Show, one for flowers and



Beautiful primroses entered last year.

12

one for vegetables. In the Summer Show we have also added a class for allotment holders.

If you are interested in bringing and showing any hellebores you may have, please look at “Greenfingers” in this issue of BT as there are some very helpful tips on how to prepare them for the show. Entries should be registered before 10.15am and staged by 10.30am. The show will open at 2.30pm until 4.30pm when the trophies will be awarded. There will be a tombola and raffle. Refreshments and homemade cakes will be served for us by The Bell.

Here is a recipe for you to try in advance of the show. Not only do you get to enjoy the delicious cake but if you enter it into the show you could win a rosette or a trophy!

Recipe for Orange cake

110 gm (4 oz) margarine

110 gm (4 oz) caster sugar

175 gm (6 oz) self-raising flour

2 medium eggs

Grated rind and juice of one orange

- Grease and line a 15 cm (6”) cake tin.
- Pre heat the oven to 180°C (Fan 160°C), 350°F, Gas mark 4.
- Cream the margarine and sugar together until light and fluffy. Beat in the eggs one at a time followed by the orange rind.
- Fold in the flour and mix in enough orange juice to produce a soft dropping consistency.
- Transfer to the prepared tin and make a slight hollow in the centre of the mixture.
- Bake in the centre of the oven for 50 – 60 minutes, until well risen and springy to the touch.
- Leave to cool in the tin for 15 minutes before turning out.

Are you new to Great Bardfield or an established villager? You will find a warm welcome at the Horticultural Society. Why not become a member and enjoy events, talks and visits arranged throughout the year. Amazing Spring and Summer shows are held where you can demonstrate your gardening and baking skills.

**For any information about Bardfield Horticultural Society please
contact Linda Prior 07969 184845**

Greenfingers

A little early to enjoy a garden? No fear, this is the month for lift off of Spring. Take a look at your plot, snowdrops, crocus and hellebores abound and shoots on flowering currant, *ribes*, are



Snowdrops and raindrops

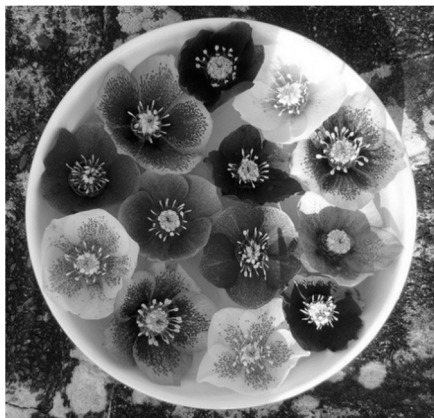
fattening. Too cold to linger? Then cut some flowering stems off the Hellebores and bring them inside. The easiest way to enjoy them is to float just the flower head in a shallow bowl. But, if they are put in a vase with perhaps hazel or dogwood stems and a few bought daffodils, hey presto, an arrangement like a professional florist.

Question is, how do you prevent the hellebores drooping? Answer is, using a sharp knife score the stem from base up to the flower-head, *score* not cut through the stem. Then with a match burn the stem end, submerge fully in a sink or deep bowl and leave for several hours, they will now be ready to pop in the vase with its foliage waiting for this star of the show.

What next? Perhaps prune the roses? But certainly, start on ...

Jobs for February

- ✿ Cut off the diseased and overly large leaves to better show off the flowers of hellebores.
- ✿ Cut down to 30cms the late small flowered clematis as they make new growth to flower July onwards - the variety will be of the Viticella group 3, look if you have the label.
- ✿ Foxgloves readily seed and can appear anywhere; this is a good time to lift them and place them where you want them!
- ✿ Sweet peas can be sown outside now, yes hard to believe but true. Doubt success? Then sow 3, 4 or 5 in a plant pot of compost and place into the growing position in April.
- ✿ Start cutting down dead stems of plants, hoeing round them, handful of feed granules and fish compost. Warning, *do not cut down penstemons* until after Easter.



Hellebores in a bowl



Clematis viticella group

I've just read the flower schedule for the Bardfield Horticultural Society Spring Show - hellebores in a class of their own plus stems in a vase, do not forget to burn the stem ends if making an entry.

Good Luck!

Nature Notes: My Garden Birds

Friends who follow my notes and know me will know I am very fond of my little feathered friends, I often have 10 or 12 blue tits or mixed numbers of the tit family on my feeders at any one time, and long tailed tits arrive en masse in even greater numbers, have a quick feed and disappear. My bird feeders are situated just outside my kitchen window and I can be working at the kitchen sink, which means I am only about 6 feet from the birds as they feed and they take no notice of me. Other visitors include the odd sparrow, dunnock, nuthatch, woodpecker and dove. On the ground I have a robin, blackbird, thrush and occasionally a pair of pied wagtails. I also have a number of unwelcome visitors: jays, magpies, wood pigeons, and even the rooks from across the road if I throw scraps on the grass. Sadly, the last two months



my garden has been bird-less, I am composing these notes part way through November and I am beginning to get worried about the situation. One would expect to see a big reduction in numbers of garden birds during September and early October due to several natural factors. First there is lots of natural food and, this year in particular, loads of berries, fruit of all types and lots of seeds and nuts of every type due to the hot summer. Secondly, a lot of birds go into a moult when they have finished breeding and keep to themselves until they are looking smart and pretty with a new set of bright warm winter feathers. Then I suppose some of them must think we have got the kids out of the way let's go on a package holiday! Ha Ha! Seriously there has been a reduction in garden bird



A pied wagtail

numbers in the last few years and I am convinced that is due to the fact that we are no longer allowed to control magpies and jays. It used to be quite an occasion when you saw a magpie and it was a rural tradition that if you saw a magpie you raised your cap and said "Good morning Mr Magpie," but since the ban they have become one of the most common birds and it's not unusual to see half a dozen of them feeding on road kill or some poor creature, and in the summer there were egg shells scattered on every foot path which they had taken from a nest and eaten the contents on a clear piece of ground. The only small birds who managed to foil these egg thieves are the ones who use nest boxes which magpies and jays can't get into but fledgelings are still at risk when they first leave the nest and they also face the ever-increasing number of sparrowhawks which used to be rare.

We recently had a very interesting talk at St Andrew's Church by a young man from South Essex Wildlife Trust. He was a jolly good entertaining speaker and made a lot of sense with most of what he said but there were a few things I disagreed with (due to the fact he had gone on for a long time and there were refreshments waiting I decided to keep quiet). I disagreed with the fact he said we are losing garden birds due to the fact there are more cats about. Although I am not a cat lover, I have known times when there have been many more cats about, lots of them being

feral cats living rough and killing to eat. In my experience cats will much rather go for rats, mice and rabbits than birds. Most people who are engaged with wildlife and conservation don't like the thought of killing anything but sadly we must maintain a balance and we have far too many magpies and jays and far too little habitat for our garden birds. Most new houses that are being built have open plan gardens and sealed eaves.

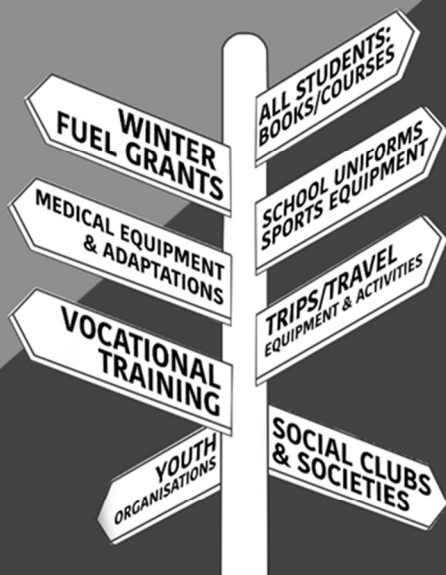


A Red Kite

Sadly, I have not yet answered the question of what has happened to my garden birds. Fast forward to the end of December, I have emptied all the old food out of the bird feeders washed and refilled them with fresh food with very little result, I have got a few of the tit family visiting and the long tailed tits have been en masse a few times, they love the fat balls but they are not feeding on a regular basis like they used to do. On the ground I have had brief visits from a thrush, a dunnock and two wood pigeons but I am rather sad. I love seeing my little feathered friends. One thing which has been brought to my attention recently is the fact that we have got as many as fifteen red kites flying together. 'What are they feeding on?' I wonder.

Mac Beanland

the GREAT
BARDFIELDcharities
Charity number 207305



CAN WE HELP YOU?

If you live in Great Bardfield, are a group or organisation benefiting Great Bardfield residents then you are eligible to apply for financial assistance.

For more information please contact one of the Trustees:

Pat Coles - 01371 810995, Mick Gell - 01371 810113

Nick Holland - 07795 280647, Annika Woodcock - 07900 491636

Cathy Stuttle - 07711 880965, Rev Alex Shannon - 01371 810309

Or email GreatBardfieldCharities@gmail.com

The Tuesday Club

We are a friendly group, which meets in the Town Hall on the second Tuesday of each month and which welcomes both men and women. In 2025 we had a varied selection of speakers; including amongst others, an amusing account of Life in Schools from a retired Head Teacher, a hilarious recap from Sharon Gould of her various careers over fifty years, a return visit from Amanda Sutherland showing us how to Make Do and Mend, a brilliantly told tale of Borley Rectory from retired actor Bryan Thurlow and an interesting and poignant account of Will Edwards' search for more details of his great uncle Harry, who died in WWI. As well as our speakers we had a summer lunch trip to The Bell in Panfield, a games afternoon, Afternoon Tea, and Christmas Lunch in the Town Hall, enjoyed by everyone.

Now we have 2026 to look forward to and we have some good speakers lined up.

Our first speaker of the new year will be Bryan Thurlow, who on 10th February, will be taking on the role of a member of the Berkely Square Music Hall to deliver a potted history of the era of the music hall with songs, monologues and anecdotes. He really is one not to be missed.

To name just a few more of our line-up of talks for this year, we will have The Wonders of Norway, Confessions of a Coach Driver, Victorian Female Detectives, A Styling Masterclass and Adeline Patti – the original Diva. All in addition to an outing in July and a Christmas Lunch to end the year in festive spirit.

We had a record number of visitors in 2025, many of whom are now members, and we look forward to welcoming even more this year. Membership for the year costs £30, and includes all talks and refreshments, but if you would prefer to just come along to a talk which appeals to you, we would love to see you on that occasion, visitors pay £5 including refreshments. There will be posters around the village each month, so feel free to just turn up for any which sound interesting, you will be very welcome. Doors open at 2.00 and the meetings start at 2.30.

Cherry Whitby

**For more details, please contact the Club Secretary
Marilyn Edwards on 01371.810555**

GREAT BARDFIELD TUESDAY CLUB

MUSIC HALL MEMORIES



A music hall presentation by
BRYAN THURLOW

We are delighted to welcome back Bryan, who, as a member of the Berkeley Square Music Hall Company, will present potted histories of the era with songs and anecdotes.

TUESDAY, FEBRUARY 10th 2025 at 2.30pm
GREAT BARDFIELD TOWN HALL

Non-members of the Tuesday Club are very welcome
Visitors: £5 per talk

A decorative border of various line-art flowers surrounds the text. The flowers include daisies, tulips, and multi-petaled blossoms, arranged in a roughly rectangular frame with some smaller flowers interspersed.

Bardfield Horticultural Society

60 Must Have Plants

A talk by

Dr Andrew Ward

from Norwell Nurseries, Norfolk

Saturday 28th February 2.30 pm

GB Town Hall

Plants for sale, raffle, tea, coffee, cake

Tickets: £10.00 members
 £12.00 non-members

From: Linda Prior (07969 184845)
 Lynne Joyce (01371 810524)

Town Hall Happenings

Our Christmas Carol Concert was a great success thanks to Bardfield Brass and Bardfield Choir. Mince pies and mulled wine were enjoyed by the sellout audience with standing room only.

Looking forward into 2026 we have a Quiz Night on 21st March (See details elsewhere in BT). We are also arranging "An Audience with Henry VIII" on 25th April with tickets available from 1st March. The annual Art show will be on 24th and 25th May.

Don't forget our new website www.greatbardfieldtownhall.com to see updates, events and contact details for tickets.

John Maidman

Chair Great Bardfield Town Hall



Great Bardfield Poetry Club

You are warmly invited to a
book launch and discussion with

Kevin Crossley-Holland

Carnegie Medal & Guardian Prize-winning Author

— and —

Rosamond Ulph

Illustrator

Saturday, 21st February | 4:30 pm

Between the Lines Bookshop

Great Bardfield



Memories of Great Bardfield in Wartime

1939-1945

I recall that there were four public houses: the Three Horseshoes, the White Hart, the Bell and the Vine. The Americans from Great Saling used to cycle to Bardfield to drink and let their hair down! The green by the school would be covered by bikes.



Harry Dodds' Shop in Brook Street

There were two butchers. All meat was on rations. Harry Stokes was where Stuart has his shop and Mr Bones was next to the Vine. Opposite the Vine Mr Bloomfield had his shop selling Tobacco, sweets (also on ration) and soft drinks etc. Mr Townsend sold batteries for torches, charged accumulators and repaired clocks and watches. Mr Piper sold green grocery and veg all grown on land behind the houses opposite the shop in Bridge Street. Where the Co-op is now, the shop was owned by Mr Campen who lived up at Walthams Cross. There was also a hardware shop to the left of the fountain also owned by Mr Campen, he also owned

a van which travelled around the villages selling grocery, paraffin and other goods.

There was a Home Guard (like Dad's Army) Mr Letts from Little Bardfield Hall was the Officer in Charge and had an Army Car, he was based at Brick House. The Home Guard formed up by the green in Great Bardfield and marched up to the Hall Meadows, behind Bardfield Hall, for target practice. On one occasion, one of the Home Guard got out of step, the Sergeant shouted out "Get in Step or I will kick your ankles." The offender



Home Guard on Parade

called out "Come and try it!" This then ended in utter chaos. Very much like Dad's Army!

We had air raid wardens, so if there was an air raid imminent, they would blow a police whistle. Each one had an area, Crown Street, Dunmow Road, Brook Street etc. The Vicar Rev Cartwright had Bendlowes Road but sometimes we boys would take the whistle from him and run around blowing it! When "All clear!" came, a hand bell would be rung. A Pill Box was constructed on the wide area in front of the fountain, so all roads were covered.

More to come ...

P G Morris

Royal British Legion

Finchingfield and District Branch

Poppy Appeal 2025

A huge thanks to all of you who helped us to achieve the magnificent total of £2,921-21p. Special thanks to the Three Tuns who donated the proceeds of their Conker Competition.

Carol Service

We were most gratified with the attendance at our Carol Service in December. We were honoured by the presence of Deputy Lieutenant Catharine Hutley and Justin Wrench, Chairman of Braintree Council.

Looking forwards to events this year

Beetle Drive in March. Date to be confirmed.

60s 70s and 80s Dance on 18 April. See next issue for more details. Hope to see you there.

**Thanks to everyone who has supported us in any way
last year.**

Contacts: Ivan Fleming (Chairman): 07525 751179
isskhs@googlemail.com

Janet Ridgewell (Secretary): 01371 810051
janet.ridgewell510@btinternet.com

Wartime Memories

Further to the comments from Peter Morris about the air-raid shelter at the school, I thought I would add a little bit more for younger readers. There was a pottery kiln in the shelter when I was at the school in the 50s and 60s, at a time when there were just four classrooms, three teachers, a headmaster and Mrs Wright in the office. School dinners were prepared by Mrs Wyatt and Mrs Ridgwell in the town hall and we had to walk there in all weathers.



Sheila Robinson – 900th Anniversary of Westminster Abbey Stamp, 1966.

But back to the kiln, Mrs Charlotte Bawden would hold occasional pottery sessions for the older pupils, where we could roll out a piece of brown clay and drape it over one of her selection of smooth large stones and trim off the surplus. This was left to dry, then inverted and the stone removed and we had a bowl. This could then be painted or decorated with white clay slip before firing. Small bowls could have a groove added to the rim and we had an ashtray. (Imagine that today!) We also did free-form modelling with the grey clay and had to hollow it out to reduce the thickness. Not all pieces survived the firing process, but many successful pieces then found their way into the children's classes in the Horticultural shows. I remember we also had a walk with her up to her house to see the layout inside the new studio. I was in the same year as Chloe Cheese, now an artist, daughter of artists Bernard Cheese and Sheila Robinson. Sheila was successful in getting her proposals for several GB Commemorative stamps accepted as did Edward Bawden although Ravilious was not so fortunate.

Mike Lewis. (GBCPS 1958-64)



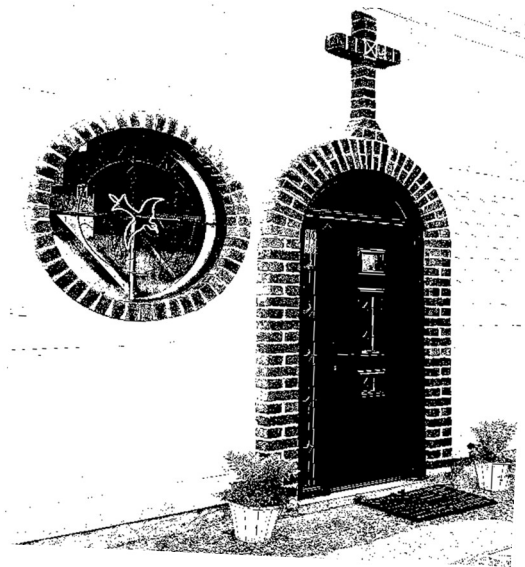
Edward Bawden – Kew Gardens Stamp, 1993

HOLY SPIRIT CATHOLIC CHURCH

Braintree Road, Great Bardfield

E mail brittofather@yahoo.com

01371 872550 or 07917 319811



Sunday Mass – 9.30 am

Saturday Mass – 5.00 at St John's Thaxted

Following the departure of Fr Celestine to South Woodford Parish, we are fortunate enough to welcome

Rev Dr. Michael J. Britto,
who is also parish priest at Dunmow.

All welcome

St. Mary's Church

Great Bardfield

MUNCHKINS

Baby & Toddler GROUP



Every Tuesday morning

In Church from 10 am

Come and join us for stories, singing and
refreshments

We look forward to you seeing you.

St Mary's Church – Great Bardfield

Services for February 2026

Sunday 1 February

Candlemas (The Presentation of Jesus in the Temple)

9am Holy Communion (traditional language) – Cornish Hall End

10.30am Benefice Communion Service – Great Bardfield

4pm Sung Compline – Little Bardfield

Sunday 8 February

Second Sunday before Lent

8am Holy Communion (traditional language) – Shalford

9.30am Morning Worship – Finchingfield

10.30am Morning Prayer – Great Bardfield

11am Holy Communion (traditional language) – Wethersfield

4pm Sung Evensong – Shalford

Sunday 15 February

Sunday next before Lent

9am Holy Communion (traditional language) – Finchingfield

9.30am Morning Prayer – Shalford

10.30am Sung Communion Service – Great Bardfield

11am Family Service – Wethersfield

Wednesday 18 February

Ash Wednesday

10.30am Sung Communion Service – Great Bardfield

5pm Reflective Service for the beginning of Lent – Shalford

8pm Said Communion Service – Finchingfield

Sunday 22 February

First Sunday of Lent

8am Holy Communion (traditional language) – Great Bardfield

9.30am Parish Communion Service – Shalford

10.30am Morning Prayer – Great Bardfield

11am Family Communion Service - Wethersfield

Regular Services and Events during the week

Monday

8.45am Morning Prayer – Finchingfield

1.30pm 'Faithful Fiction' book club (1st weeks)

Between the Lines, Great Bardfield

Tuesday

8.45am Morning Prayer – Great Bardfield

10am Baby & Toddler Group – Great Bardfield

'St Mary's Munchkins' story & song time with refreshments

Thursday

8.45am Morning Prayer – Wethersfield

10am Prayer Group (1st, 3rd & 5th weeks)

Coffee Morning (2nd & 4th weeks) – Shalford

Coffee Morning (3rd week) – Cornish Hall End

10.30am Eucharist – Little Bardfield

Friday

8.45am Morning Prayer – Shalford

Saturday

10.30am (3rd weeks) Coffee Morning – Wethersfield

Time for you...

With Julie

Newly opened: Holistic Therapies available locally at my treatment room in Great Bardfield, Blush Beauty at The Blue Egg, and (by arrangement) local home visits. So if you feel you would benefit from Reflexology, Indian Head Massage or Hopi Ear Candles, please do get in touch today to book your appointment.

I look forward to meeting you!

Julie - 07967 989124

Juliepavitt24@gmail.com



BETWEEN THE LINES

Your independent local bookshop

We offer a wide range of classic and contemporary fiction and non-fiction for all ages, plus cards, beautiful stationery and wrapping paper.

Tea and coffee served daily.

Help to support independent bookshops by using www.hive.co.uk for your online book shopping.

**Open 10.00am to 4.00pm every day
including weekends.**



Between the Lines, The Old Post Office, High St, Gt Bardfield, Braintree, Essex CM7 4SP.
Tel: 01371 810087 Email: booksbetweenthelines@gmail.com



Brook Street Deli

*Cheeses, Pies and
Cooked Meats*

*Sourdough on Fridays and other fresh
bread on Saturday*

Opening Times

Wednesday – Friday 9.00am – 5.00pm

Saturday – Sunday 9.30am – 3.00pm

Brook Street Butchers



brookstreetbutcher@gmail.com

01371 810236

Vegetables and fish also available

OPENING TIMES

Tuesday	08:30 – 17:30	Friday	08:30 – 18:00
Wednesday	08:30 – 18:00	Saturday	08:00 – 16:30
Thursday	08:30 – 18:00	Sunday	09:00 – 15:00



Limeridge Ltd

Painting & Decorating

- ※ INTERIOR & EXTERIOR
- ※ FAMILY RUN BUSINESS WITH OVER 50 YEARS EXPERIENCE
- ※ FREE NO OBLIGATION QUOTATIONS
- ※ SPECIALISING IN PERIOD PROPERTIES
- ※ VICTORIAN & GEORGIAN WINDOW REFURBISHMENT
- ※ WOOD & RESIN REPAIR CARE SPECIALIST
- ※ COMMERCIAL & DOMESTIC WORKS
- ※ RESIDENTIAL MAINTENANCE
- ※ OFFICE & RETAIL
- ※ FRIENDLY & RELIABLE



www.limeridge.CO.uk North Essex 01787 727101 & 07960 370333



Let the oil lady look after
your heating oil needs.

THE

OIL LADY

SYNDICATE BUYING POWER

Heating oil for homes and fuel for commercial properties in Essex and surrounding counties. Syndicate buying saves money and we always give you our best price every time, no hassle or need to haggle. We are reducing the number of heavy goods vehicles in our tranquil villages. Why not join your friends and neighbours saving money, syndicate membership is free and with weekly orders we have low cost heating oil when you need it.

t. 01371 238080 www.theoillady.co.uk

Croft House, Spains Hall Road, Cornish Hall End CM7 4HT e. info@theoillady.co.uk

10% discount off list price on production of this voucher

Terms and Conditions Apply | Valid until 20/12/26 | 1 Voucher per transaction



Tool & Equipment Hire

Open Mon - Fri 7:30 - 17:00

Access Equipment - Plant - Power & Lighting - Electrical Tools -
Gardening Equipment - Petrol/Diesel Generators - Cement Mixers
- General Building & Decorating - Drilling, Breaking & Fixing

FLO GAS

**Our Full Range Of Equipment Is
Available For Hire Now**

Weekend Hire Rates Available

Unit 4, Hoblongs Industrial Estate,
Chelmsford Road, Great Dunmow,
CM6 1JA | 01371 700727



SCAN ME



727 Tool Hire

THE RETREAT

Beauty and Holistic SPA

Hidden away in the
Essex countryside...



Spa Garden
Barrel Sauna
Hydrotherapy Pool
Slipper baths
Relaxation suite
Private hire



Massage
Facials
Holistic treatments
Manicures/Pedicures
Tanning/Waxing
Threading

...a haven from the
bustle of daily living

Call 01371 878989
or visit

www.theretreatspa.co.uk

KITTEN + HARE

THOUGHTFUL HAIRDRESSING



Kitten and Hare is a sustainable hair salon
based in Great Bardfield Essex.

Founded by Husband and Wife and created
with a lot of love.

A family-run business with a warm
atmosphere, cool interiors, and friendly
personable service.

This is the salon where everyone is welcome.
Good vibes only.



Kids half price
tues-fri



Braintree road
Great Bardfield
cm17 4rn

K + H

Monday	Closed
Tuesday	9-6
Wednesday	9-6
Thursday	9-6
Friday	9-7
Saturday	9-6
Sunday	Closed



01371 829864



www.kittenandhare.co.uk



@kittenandhare



We are a sustainable, vegan-friendly salon complete with a shampoo refill point.



“Providing the best feeds for your animals needs”

We stock a variety of products to suit
all your animal's needs.

From Horses to Dogs, Cats, Small
Animals and Poultry

Stocking Feed, Bedding,
Supplements, Toys, Treats & more
for all your animals!



Animal feed enquiries contact us on:

No: 07485001742

Email: info@fairyhallanimalfeeds.co.uk

**Field maintenance enquiries contact Wayne
on:**

No: 07922567824

Email: info@fairyhallanimalfeeds.co.uk

visit us on our
website!



Fairy Hall Field Maintenance:

Examples of Services Provided: Hedge
Cutting, Topping, Grass Cutting, Hay Making



**Fairy Hall, Fairy
Hall Ln, Rayne,
Braintree CM77
6TA**

BARDFIELD COUNTRY INTERIORS

Decorative items for the home
Hand painted furniture
Stockist for Frenchic Paint

Iron Orchid Design, decorative transfers,
stamps and moulds
Little Greene Paint co



The Old Stores, High st, Gt Bardfield CM7 4SP
01371 810110 or 07837 606631

B.L RYMAN PLUMBING AND HEATING SERVICES

-PLUMBING AND HEATING
-SHOWER AND BATHROOM INSTALLATIONS
-WALL AND FLOOR TILING
-GENERAL MAINTENANCE/ 24HR CALLOUT

LOCAL QUALITY WORKMANSHIP SINCE 1971
TEL 07867804814





Elevate Solar

Noticed an increase in your energy bills?

TAKE BACK CONTROL WITH SOLAR ENERGY

SAVE
£250
WITH THIS
LEAFLET

CURRENTLY VAT FREE

BOOK YOUR FREE CONSULTATION

www.elevatesolar.co.uk

01371 875222



**HOW MUCH MONEY DO I NEED TO
RETIRE?**

**COULD I RETIRE SOONER THAN I
THINK?**

**IS HMRC SET TO INHERIT MORE
THAN MY LOVED ONES?**

**Stop guessing about your future.
Start planning it.**

Senior Partner Practice

**St
James's
Place**

Call Rory for an informal chat today



**07379 227 131
01245 522 130**

**rory.hitchcock@sjpp.co.uk
www.watchhousefp.co.uk**



**Retirement
planning**



**Tax efficient
investment
management**



**Succession &
Inheritance
planning**



WATCH HOUSE
FINANCIAL PLANNING

Watch House Financial Planning Limited is an Appointed Representative of and represents only St. James's Place Wealth Management plc (which is authorised and regulated by the Financial Conduct Authority) for the purpose of advising solely on the group's wealth management products and services, more details of which are set out on the group's website <https://www.sjp.co.uk/products>. The 'St. James's Place Partnership' and the titles 'Partner' and 'Partner Practice' are marketing terms used to describe St. James's Place representatives.

SJP Approved 19/11/2025

www.valetingdirect.com

**Mobile Car Valeting in Little Bardfield, Great Bardfield, Thaxted,
Finchingfield, Saffron Walden and surrounding areas**

Whatsapp: 07367 730973

Phone number: 08456 526267

01279 444399

Email: enquiries@valetingdirect.com



EASTERN GARAGE



WETHERSFIELD ROAD - FINCHINGFIELD

01371 810238

e-mail info@easterngarage.net

Most Makes of Car Serviced and Repaired by our Highly Experienced Staff

While - U - Wait Services - MOT with FREE re-test

FREE checks of Tyres, Batteries and Exhausts

FREE Accident Repair Estimates

FREE local Collection and Delivery of Vehicles

Spare Parts for Most Vehicles Available

24 Hour Breakdown and Recovery service

MAKE THE MOST OF YOUR LOCAL GARAGE





S&R Sweeps
CHIMNEY SERVICES



Your family ran, professional chimney sweeps!

- Chimney and Flue sweeping
- Open Fires
- Inglenooks
- Wood burning stoves
- Multi-fuel stoves
- Aga/Rayburn
- Birds Nest Removal
- CCTV inspections
- Pre-install sweeping

Any active chimney/flue (lined or unlined) should be swept at least once a year to ensure it is safe and working efficiently.

To book in or for any advice on your appliance please visit our website or contact us by phone or email.

www.srsweeps.co.uk srsweeps@outlook.com

07518 690 544

Eileen Harte Therapy

Parent Support

Finchingfield, Essex

- Challenging behaviour
- School avoidance
- Teen tensions
- Parent exhaustion
- Empty nest syndrome



Follow Me On Instagram

**Sessions takes place in our authentic Yurt,
surrounded by nature and our
thoroughbred herd**



Rates from £60 per hour face to face
Options available to work with the herd

Enquiries: eileenhartetherapy@gmail.com

BACP member.

Adlerian Psychotherapist

IAN HOLMES

Water Softener Services

TOUCAN™
WATER SOFTENERS



Suppliers & Installers of DOMEXTRA & TOUCAN Water Softeners

• Service & Repair • Filters • Taps • Salt Tablets

We are a family run business, established in 1994 by Ian & Alicia Holmes.

Our Director, Ian Holmes, has been working in the
Water Softening industry for over 30 years.

Tel: 01371 810406 E-mail: iholmeswss@aol.com

www.ianholmeswaterssofteners.co.uk

SIMMONS ELECTRICAL

Ian Simmons

Local Domestic Electrician

Fully qualified electrician based in Hellions Bumpstead, serving the local area,
Cambridgeshire, Suffolk & Essex.

- 24 Hr Emergency Callout
- Fault finding
- Part/Full Rewires
- Maintenance, testing and inspection
- Indoor & outdoor installations –
Lights, sockets, switches
- Fuse board replacement

All aspects of electrical work carried out, installation, repair and maintenance
All work is insured and guaranteed



Linked 

Mobile : 07910 708728

E-mail : ian.electrical1@gmail.com

Gainsford Hall Workshop

01787 238110



GAINSFORD END, TOPPESFIELD CO9 4EJ
gainsfordhallworkshop@outlook.com



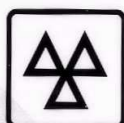
CAR & LIGHT COMMERCIAL
VEHICLE SERVICING



AIR CONDITIONING



TYRES &
EXHAUSTS



MOT
TESTING



WHEEL BALANCING
& ALIGNMENT

KRW

Tree Care

Kevin Wade - Tree Surgeon

Telephone **01371 810035**

Mobile **07812 984875**



- PLUMBING
- KITCHENS
- BATHROOMS
- PLASTERING

Julian Peer

OLD COTTAGE
BRICK KILN GREEN • BLACKMORE END • CM7 4DT
jpeer2@hotmail.co.uk
M: 07814 996256



GREAT BARDFIELD PRE SCHOOL

Situated within the Great Bardfield Primary School grounds, the Pre School aims to provide a friendly environment which is rich in learning experiences to encourage physical, creative, imaginative and social play.

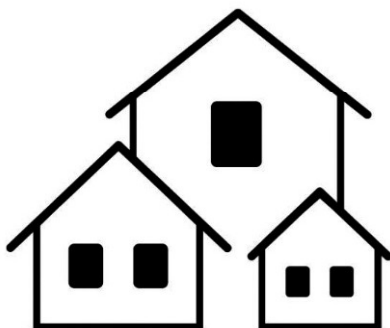
We open for 5 morning sessions a week for
Children aged 2 ½ to 4 years.

If you would like to come and see our facilities and meet our friendly experienced staff please contact the
Pre School Supervisor,
Kathy King, on 01371 811580



Great Bardfield

Your **LOCAL** Estate Agent



**Valuations Sales Mortgages
Letting & Management**

www.grayandcompany.co.uk
enquiries@grayandcompany.co.uk
01371 810154





All carried out by a fully
qualified nurse with many
years of experience.

All in the comfort of your
own home.

Call Sarah:
07484716464

**Ear Care by
Sarah**



EAR IRRIGATION £55
PRE-HEARING AID CHECK £20

R. B. GROUNDWORKS & LANDSCAPING

SERVICES INCLUDE:

Patios - Decking - Driveways

Fencing - Drainage

Ground Clearance

Mini Digger and Driver Hire

Contact Richard Beanland

Tel: 07515 631321

email: richardbean1@live.co.uk



CHIROPODIST / PODIATRIST

ANDREW MARLOW MSSCh MBChA

REGISTERED WITH THE HEALTH AND CARE PROFESSIONS COUNCIL

Treatment in the comfort of your own home.

SOME EVENING AND WEEKEND APPOINTMENTS AVAILABLE

Tel. 07754 700950

e-mail amarlowfeet@outlook.com

Anglian Electrics



For all your Electrical Needs

- Fault Finding • Diagnosis
- Garden lights, sockets, garage, sheds, garden rooms & offices
- Faulty or New socket • Full rewire • New Fuseboxes
- EV charging point installation

Tel: 01787 278511 | 07825 348 536

www.anglianphe.co.uk • Local Family Business



10% DISCOUNT
FOR OAPs

£10 discount
if we are late for an appointment

Anglian Plumbing



PLUMBING HEATING ELECTRICAL ENGINEERS

All GAS OIL LPG & ELECTRIC – Heating Fixed Repaired or Replaced

- New boilers with 10 year warranty • Landlord gas certificates
- New bathrooms & kitchens designed & installed • Fault finding - no problem
- Radiator Power flushing • New taps • Sinks • Baths • Leaks fixed fast!
- All work fully guaranteed and insured

Tel: 01787 278511 | 07825 348 536

www.anglianphe.co.uk



10% DISCOUNT
FOR OAPs

£10 discount
if we are late for an appointment

Janus Contract Services Limited

www.januslimited.co.uk



ANIMAL FEEDS

Horse Feed
Pet Foods
Beddings & Shavings
Wild Bird Foods
Bird Feeders
Chicken Feed
Free Delivery



FENCING SUPPLIES

Field & Garden Gates
Posts & Rails/Stakes
Concrete Posts & Panels
Electric Fencing
Rabbit Netting
Sleepers
Delivery & Installation

Mounts Farm, Shalford Road, Rayne, CM77 6XA. (01376) 342111



Zero Three Care

Support Workers

**Do you want a job that is different every day?
Do you want opportunities to develop and progress?**

We are looking for enthusiastic and hardworking people to join our teams in Thaxted, Silver End and Cressing.

In this rewarding role, you will support young adults with autism, learning disabilities and complex behaviours to lead fulfilled and independent lives.

No experience necessary.

Benefits include competitive pay with enhanced night rates, and ongoing training program.



For an informal chat call Jade or Michelle on 01376 574150 or email: recruitment@zerothreecarehomes.co.uk

www.zerothreecarehomes.co.uk





novuscare

Care in the Heart of your Own Home

Are you or an elderly loved one looking for extra care and support at home in **Bardfield** or the surrounding areas? Then our local carers are here to help.

Novus Care is regulated by the Care Quality Commission and can provide a qualified carer to support your loved one in their own home from **just 30 mins per week to full-time live in care.**



For more information or to arrange a free assessment, please contact the Novus Care Team on:

T: 01268 960286 | E: hello@novus-care.com | W: novus-care.com

EXECUTIVE CARS

07971 972124

Airports – Theatre – Events – Days Out

Local / Nationwide

Call for a Competitive Quote

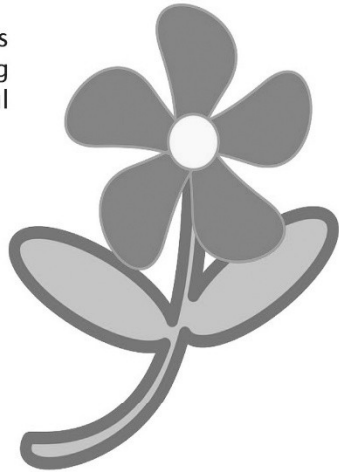
Reliable, Friendly, Local Lady Drivers

KEEP GROWING

SOCIAL AND THERAPEUTIC HORTICULTURE PROJECT
Bardfield Vineyard and Great Lodge Garden

The KEEP GROWING project supports adults with mental health issues using gardening and working on a vineyard in a beautiful rural setting. It is free of charge.

- ◆ Improve mental and physical wellbeing
- ◆ Learn new skills in a structured and supportive environment
- ◆ Improve confidence and self-esteem
- ◆ Reduce loneliness and isolation
- ◆ Manage stress and anxiety
- ◆ Meet new people



There is the opportunity to take part in the following:

- ◆ Gardening tasks
- ◆ Vineyard tasks
- ◆ Craft activities
- ◆ Nature walks
- ◆ Alpaca feeding

For further information and to join the project please contact;

Rebecca Jordan on 07961078522 or

Claire Griffiths on 07983 823388

Email: rebeccca@greatlodge.co.uk

Bardfield Vineyard and Great Lodge Garden

Great Bardfield, Braintree, CM7 4QD

Project takes place every Tuesday morning 9.30 – 12.30, refreshments provided



**BEAUTIFUL BESPOKE FLOWERS FOR ALL
OCCASIONS**

PLEASE CALL US ON 01371 811102 OR ORDER
VIA OUR WEBSITE
WWW.THEROSEGARDENFLORISTS.CO.UK

THE BLUE EGG, BRAINTREE ROAD,
GREAT BARDFIELD, ESSEX CM7 4PY



Claire's
Mobile hairdressing

Covering Great Bardfield and surrounding areas

15 years + experience

Offering a friendly and reliable home service
protective equipment worn and equipment sterilised

Please contact Claire on

07545913853



THE BELL INN
GREAT BARDFIELD

*Zoey, Scott and the Team are delighted
to unveil a breakfast service on
Saturdays and Sundays 9am till 12.30pm.
Full menu on our website.
Please book to confirm your table!*

Opening Times for lunch and dinner service Wednesday to Saturday

Lunch Service: 12pm to 3pm

Dinner Service: 5.30pm to 8.30pm

Pub opens at 12 noon Mon. to Sun. – see website for details

The Bell looks forward to inviting both familiar faces and new visitors to experience our menus and a drink by the fire.

Alongside the varied menu guests can continue to enjoy the Bell's welcoming atmosphere, well-kept local ales, fine Bardfield Vinyard wines and the character that makes *The Bell Inn* a true community hub.

01371 782030

info@thebellinngreatbardfield.co.uk www.thebellinngreatbardfield.co.uk

VISIT OUR WEBSITE BELOW
FOR MORE INFORMATION
ON VISITING TIMES



BRAINTREE RD
GREAT BARDFIELD
ESSEX
CM7 4PY

SHOP | EAT | PLAY | EXPLORE



SHOP |
THE BLUE EGG



BEAUTY SALON |
BLUSH



OUTDOOR AREA |
ANIMALS AND MORE



CAFE |
KNEAD FOOD



FLORIST |
THE ROSE GARDEN



POST OFFICE



GARDEN CENTRE |
PLANTS



CHILDREN'S NURSERY |
BARDFIELD MONTESSORI



BOTTLE BANK

shop@theblueegg.co.uk

www.theblueegg.co.uk

01371 811716



W. Hutley Ltd

**GROUNDWORK & BRICKWORK
CONTRACTORS**

**FOUNDATIONS
& GROUND BEAMS.
ALL ASPECTS OF PAVING.
DRAINAGE & WATER MAIN
INSTALLATION & REPAIRS.
DRAIN CLEARANCE.
NEW SEPTIC TANKS
& MAINTENANCE.**

**Tel: 01371 820227
Mob: 07899 958 990**

whutleygroundworks.co.uk

Countryside

s e r v i c e s

oil boilers • heating • tanks

- Servicing
- Breakdowns
- Commissioning
- Oil Tanks

James Yearley M: 07734 801066
E: countryside.services@hotmail.com





Bell Fencing

Equestrian Agricultural Commercial Domestic

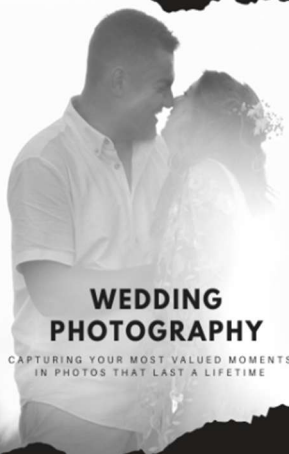
www.bellfencing.com

enquiries@bellfencing.com | 07786 914823

WWW.MOSTVALUEDPHOTOS.CO.UK

MVP

MOST | VALUED | PHOTOS



WEDDING PHOTOGRAPHY

CAPTURING YOUR MOST VALUED MOMENTS
IN PHOTOS THAT LAST A LIFETIME

contact@mostvaluedphotos.co.uk

Rothwell's Carpet Cleaning

Carpet Cleaning & Stone Floor, Upholstery, Rugs

A few points that make us stand out,

Rothwell's has been in business since 1993

We're an honest local family firm.

Our large truck mounted machines mean
more cleaning & drying power
for the best results possible.

Members of both the NCCA and TACCA.

We will move the furniture.

100% satisfaction or it's FREE.

*Call Oliver and Max Campbell
for expert help today.*

01638 428 060

www.Rothwells.biz

Braintree, Halstead & Haverhill Physiotherapy & Sports Injury Clinics

Reduce pain & promote healing

*Evening & Saturday
appointments available*

01376 334040

21 Coggeshall Road, Braintree CM7 9DB

www.braintreephysiotherapyclinic.co.uk



Affordable, award winning
websites for local businesses

Whether you are selling your
products or skills on the internet
or you have a website that needs
to be made mobile-friendly, we
can help you now.

You'll be surprised how little it
costs!

Call  01371 810743

Please call Simon for a friendly chat and a free quote

www.electricwebsites.co.uk

AD

FUEL OILS LTD.

Your local answer!

**NOW
SELLING
LPG AND
AdBlue®**



Commercial and general public
welcome with easy access for all cars and vans

Yard sales from A D Fuel Oils Ltd

Banters Lane, Great Leighs, Nr. Chelmsford, Essex CM3 1QX

Opening Hours: Monday-Friday: 8am - 5pm

Saturday: 8am - 1pm

01245 362616 • www.adfueloils.co.uk

Products available for collection or delivery:

- | | | |
|----------------------|------------------------|----------------------|
| • Petrol | • Paraffin | • Barrel dispensers |
| • Diesel | • AdBlue | • Rotary pumps |
| • Kerosene | • LPG | • Boiler additive |
| • Gas Oil/Red Diesel | • 20 litre containers | (Additive for Aga's) |
| • PBO | • 205 litre containers | |

EDEN PRINT

Leave a Lasting Impression

- Leaflets • Posters • Booklets • Signs • Banners • Notepads
- Custom Shape Labels • Business Card • Letterheads
- Mugs • Greetings Cards • Raffle Tickets • NCR Pads • Plans



sales@eden-print.co.uk • www.eden-print.co.uk
Unit 7 Rippers Court, Sible Hedingham, Essex - 01787 469628



Contact Pete for all enquiries:

Mobile: 07790094646

Email: pete@fittplumbing.co.uk



Over 20 years experience
as a qualified heating and
plumbing engineer, based in
Great Bardfield.

- New Boiler/Heating Installations and Servicing
- Boiler Breakdowns
- Bespoke Bathrooms
- Heating/Plumbing Repairs
- Rayburns
- Installation of Oil Tanks
- Unvented Systems



Service Department:

01371 504048

service@owlshall.co.uk

Installations Department:

01371 850698

sales@owlshall.co.uk

Delivering complete wastewater solutions

Installs | Homebuyer/seller surveys
Servicing | Repairs | Emptying

owlshall.co.uk

Visit our
online store:

owlshall.co.uk/shop
or scan the QR code



MARTIN BALL

FIREWOOD & TIMBER

www.martinballfirewood.co.uk

sales@martinballfirewood.co.uk

Office • 01799 586 513
Woodyard • 01371 830 503
Mobile • 07980 258 003

Blunts Farm Yard
Thaxted
CM6 3PX

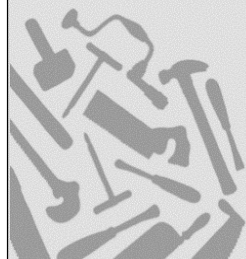
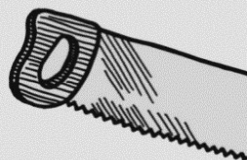
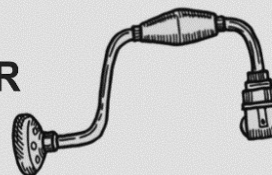
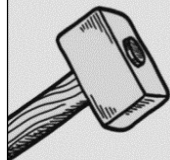


PAT QUINN BUILDER & CARPENTER Services

- Home Repairs, Maintenance & Renovations • Plastering • Painting
- Tiling • Kitchens • Bathrooms
- Windows & Doors • Flooring & Skirting
- Roofing, Tiling & Lead Work • Exterior Installations and Repairs • Decking & Pergolas • Home Offices & Sheds • All of your carpentry and general building needs

Contact Pat Quinn on 07916 232587 or
pwquinnltd@gmail.com

Over 40 years of experience working as a builder and carpenter on a range of project sizes; has vast experience working on period properties.



NOW OPEN



**FIND US BEHIND THE VINE PUB
CM7 4SR**

**TO BOOK CALL 07395700478
WALK INS WELCOME**

T&S Building Ltd.

01371 811 295 or 07736 334203

www.facebook.com/TSBuildingLtd

trevorbrockwell@yahoo.co.uk

General Builder

New build

Renovations

Extensions, Home Improvements,
Kitchens, Bathrooms,
Wind Repairs to Roofs, chimneys and Garden Fences.

Experience at working with
Listed Buildings.

Always wanted that open plan kitchen/diner?

Why not call for a free quotation

or to discuss your ideas?

No job too small or too big.
Full public liability insurance cover.



The perfect alternative to timber sash windows

The Bygone Collection is the flagship range of Sash Windows, featuring the most exacting detail, innovative elements, and a perfect finish to ensure you fit the very best sash windows you can to your home.

Our range is designed to satisfy the requirements of modern windows and to comply with current building regulations. But most of all for the windows to blend seamlessly into their surroundings and to retain the character, charm and period feel of your home.



To find your local Master Installer visit

www.masterframe.co.uk

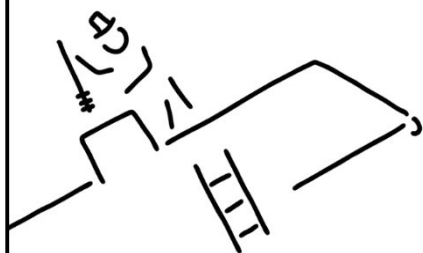
Tel: 01376 510410

Physics Tuition

Highly experienced qualified teacher and private tutor offering one to one A level and GCSE tuition.

- Extensive teaching and tutoring experience across the full ability range
- Enhanced DBS certified
- Physics graduate and PGCE
- Lessons tailored to the requirements of the individual student
- Experienced with all main exam boards
- Help with revision/preparation before exams
- Based in Great Bardfield

Contact Gary for all enquiries **Mobile: 07821 535559**



- ✓ Traditional and rotary power sweeping
- ✓ Servicing open fires and wood burners for maximum efficiency
 - ✓ Nests and bee hive removal
- ✓ Chimney inspections with HD camera
 - ✓ All swept chimneys inspected.
 - ✓ N.C.A.S. Certificates issued
- ✓ Relevant certificates for insurance purposes, including thatched properties



HETAS
APPROVED
PUBLIC
LIABILITY
INSURANCE

Andrew Smith
andrewgbsmith@gmail.com
07485 038 299 or 01787 471 161



Dog Friendly





The Hawthorns
BRAINTREE

DINE IN WITH US

All-inclusive living at the Hawthorns retirement communities means you can relax and enjoy restaurant-quality meals in sociable dining rooms with no need to venture out for shopping or do the washing up.

Chefs use a thoughtful approach to develop nutritional and delicious menus, offering choices at every meal to suit all tastes and dietary requirements.

01376 778212 | hawthornsretirement.co.uk

Meadow Park | Tortoiseshell Way | Braintree | Essex | CM7 1TD

THAXTED STOVES & FIREPLACES



**Beat the fuel crisis
and stay warm for less
this winter**



thaxtedstoves.com
01799 599333
info@thaxtedstoves.com

**Complete installation
service from start
to finish**

Visit us, browse & get advice:
2 Wrights Yard, Wimbish,
Saffron Walden CB10 2XJ



ROE ENVIRONMENTAL LTD

Working for the Environment

Family Run Business since 1953



Domestic services offered:

- Septic Tank, Cesspool & Treatment Plant emptying.
- Drain blockage clearance
- Pump repairs and replacements
- Treatment Plant installation
- Servicing and maintenance
- Drain CCTV surveys and inspections
- Replacement Manhole lids / covers
- Emergency response 24/7



**Please take photo
of me and keep
on your phone**



Fleet Farm, Fambridge Road, North Fambridge, Chelmsford, Essex CM3 6NB

T: 01621 740704

E: enquiries@roeenv.co.uk www.roeenv.co.uk

CODE: ROE011



Call for new members!



The Bardfield Players was **established in the 1920's** - but has been managed very successfully by Ian Ruffle since 1999.



We are award winning members of the North Essex Theatre Guild and our aim is to put on two productions per year—normally May and November.

We have several opportunities for:

- **Set Builders**
- **Costumes/Make-up/Hair**
- **Stage Management**
- **Actors—all abilities welcome!**



We would be delighted to hear from you—come and be part of our friendly and dedicated troop.



For more information contact:

Ian Ruffle. T: 07980 960082

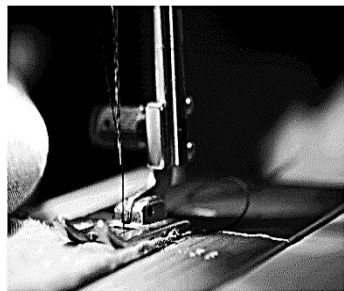
E: ian.ruffle@gmail.com



Great Bardfield Town Hall

Those Little Sewing Jobs? Look No Further!

Friendly and locally based, please contact Lisa
for a free, no obligation consultation and advice.



L9pope@gmail.com 07941 129297

Blinds
Cushions
Table Runners
Napkins
Soft Furnishing Alterations
Clothes Alterations

Barty's
OVEN
Cleaning Services

Call: 07837 294 686

**Do you want a clean oven?
Are you too busy to spare the time?**

Let Barty's Oven Cleaning Service help you

Bringing the 'sparkle' back to your appliances!



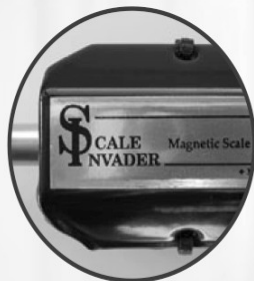
Ovens • Grills • Extractors • BBQ's • Microwaves • Hobs
Ranges • Aga's • replacement bulbs and filters • Combi Ovens

SCALE INVADER

**Are you constantly
battling with
limescale?**

**Here's the
solution**

www.scaleinvader.com
07906891667
info@scaleinvader.com



- ✓ Reduces limescale
- ✓ No maintenance, no power
- ✓ Saves money on electric/gas bills
- ✓ Just fit & forget
- ✓ Easy to install
- ✓ Money back guarantee
- ✓ No cutting of pipe work

PLUMBING AND HEATING

- ✓ Central heating installation and maintenance
- ✓ Oil boiler installation, service and repair
- ✓ Oil tank replacement
- ✓ Unvented cylinder installation service and repair

Call P Burton on: 07906891667

RECOMMENDED
PLUMBER
"our reputation is in our name"



Mercer & Hughes Veterinary Surgery



Great Dunmow
01371 872836

5-6 Chelmsford Road Ind. Estate
Great Dunmow CM6 1HD

Saffron Walden

01799 522082

14 Radwinter Road
Saffron Walden
Essex CB11 3JB

Stansted

01279 813780

80 Cambridge Road
Stansted Mountfitchet
Essex CM24 8DA

Braintree

01376 743893

175 - 179 Church Lane
Bocking Braintree
Essex CM7 5SG



24HR EMERGENCY SERVICE



www.mercerandhughes.co.uk

R & D Painting and Decorating Service

**Call mobile 07501 968205
or Email robertcandler@aol.com**

External and internal
MDF panelling
Rotten windows

Free quotes, no job too small

Robert Candler



Call IAN TIMOTHY on 01223 892027



OIL AND GAS BOILER ENGINEER

CORGI



REGISTERED

**CENTRAL HEATING MAINTENANCE & REPAIR SERVICE
FOR ALL YOUR GAS & OIL BOILERS ALSO RAYBURNS**

R. Wheeler



Roofing Services

TILING SLATING LEADWORK GUTTERING
FLAT ROOFS REPAIRS

Home: 01371 811308

Mobile: 07951 349837

**Free Estimate All Work Guaranteed
25 Years Experience**

PARAGON SCHOOL OF FURNITURE RESTORATION



SHORT COURSES IN

- ◆ Furniture Restoration
- ◆ French Polishing
- ◆ Scratch Repair
- ◆ Veneering
- ◆ Chair Seating
- ◆ Oil & Water Gilding
- ◆ Gilding Restoration
- ◆ Japanning

Furniture Restoration Classes
CALL FOR AVAILABILITY

**FURNITURE RESTORATION
SERVICE ALSO AVAILABLE**

T: 01371 832 032 M: 07870 907 497

email: mail@paragoncourses.co.uk

www.paragoncourses.co.uk

Town & Country



Sweeps

Chimney Services

**CLEAN CHIMNEYS ARE SAFER
CHIMNEYS**

Chimney Sweeping
Stove Servicing & Maintenance
Nest Removals
CCTV Inspections
Bird Guard & Cap Fitting
and much more

07703 740638

www.townandcountrysweeps.com





Aqualife Gallery

Design - Build - Maintenance

Ponds, Streams, Waterfalls, Fountains & Wildlife Ponds
Damp & Bog gardens

Cleaning, Maintenance & Renovation service for existing Ponds

Call Keith: 07468 451416

Email: keith@aqualifegallery.co.uk



THAXTED BUILDERS LTD

Est. 1966



**Carpentry & Joinery - Brickwork - Lime Plastering
Roofing - Restorations of Listed Building
New Build - NHBC Registered**

Phone: Robert Johnson 07802 414 051

Email: thaxtedbuilders@aol.com

KS1/KS2 TUITION

Qualified Primary School Teacher offering private tuition for
English, Maths and Science.

Personalised lessons, catering for individual needs.

Enhanced DBS certified. Based Gt. Saling

Enquiries Emma 07714939162



BELLRINGING

Learn to ring the
world's biggest musical
instrument!

- Free Lessons
- All-Weather Community Activity
- Centuries-Old British Skill
- Multi-Generational Friendships
- Adults & Children (10yrs+) Welcome

Find out more:

BardfieldBellringers@gmail.com
01371 810209 or 07795 280647

Begin a new *physical, mental, & technical* challenge today!

Mobile Library stopping in Dunmow Road

On the following dates

12-Feb, 5-Mar, 26-Mar, 16-Apr, 7-May, 28-May, 18-Jun, 9-Jul,

30-Jul, 20-Aug, 10-Sept, 1-Oct, 22-Oct, 12-Nov, 3-Dec

Between 11.10 and 11.45am

A.KEMP GARDEN SERVICES

GARDEN MAINTENANCE & LANDSCAPING

Lawn Care Specialist, Cultivated Turf Supplied and Laid, Planting and Pruning,
also Fencing, Patios & Block Paving Driveways

For FREE Estimates call

ALAN on 01371 811972 or 07866 519290

Fully Insured and Qualified



Jaggar

ACCOUNTANTS

A friendly and forward-thinking accountants, based in Great Bardfield

Our Services

Each business is unique in their requirements and needs so our services can be tailored to cover all that you need

- ✓ Year-end Accounts Production
- ✓ Business Tax Returns
- ✓ Personal Tax Returns
- ✓ VAT Returns
- ✓ Payroll
- ✓ Bookkeeping
- ✓ Management Accounts
- ✓ Business Support & Advice



jaggaraccountants.co.uk

hello@jaggaraccountants.co.uk

01371 513666



Town Hall Diary

February 2026

Tuesday 3 rd	Dance Fit Class	9.30am
	Mobility & Balance	10.30am
Friday 6 th	Cinema Club	7.30pm
Tuesday 10 th	Dance Fit Class	9.30am
	Mobility & Balance	10.30am
	Tuesday Club	2.00pm
Wednesday 11 th	Parish Council Meeting	7.00pm
Sunday 15 th	Private Function	11.00am
Saturday 21 st	School Quiz	7.00pm
Tuesday 24 th	Dance Fit Class	9.30am
	Mobility & Balance	10.30am
Saturday 28 th	Horticultural Society	2.30pm

For private parties, social activities, exercise classes, meetings.
Excellent facilities, including spacious kitchen and catering equipment, sound
system with hearing loop, free Wi-Fi, stage and meeting rooms.

Enquiries and bookings: **bardfieldtownbookings@gmail.com**

Great Bardfield Parish

Chair of the Parish Council

Carolynne Ruffle 810986

Clerk to the Parish Council

Kate Fox clerk@greatbardfield-pc.gov.uk 810111

Councillors

Janet Dyson 07957 483207

Iain Graham 07831 595555

Darren Hockley 810836

Peter Walmsley 07843 498253

Mark Wells 07788 318118

Richard Winsborough 07917462320

Little Bardfield Parish

Chair of the Parish Council

Andrew Davies cllr.adavies@littlebardfield-pc.gov.uk

Clerk to the Parish Council

Sophie Wolker clerk@littlebardfield-pc.gov.uk

Braintree District Council

Councillors

Cllr Michael Staines 07922 487666

Cllr Mark Ault 07903 744481

Uttlesford District Council

Councillor

Cllr Mike Tayler cllrtayler@uttlesford.gov.uk

Police

for non-emergency enquiries dial 101

for emergency enquiries dial 999

1st Finchingfield Scout Group

Mark Wells 810447 mark.2millside@btinternet.com

Bardfield Charities

Nick Holland 07795 280647

Bardfield Horticultural Society

Linda Prior 07969 184845

Bardfield Players

Ian Ruffle 810986

Gt Bardfield Allotments

Adrian Thomson

Gt Bardfield Bell Ringers

Nick & Sarah Holland 810209

Gt Bardfield Historical Society

tim_regan82@hotmail.com

Gt Bardfield Pre-School

Kathy King 811580

Gt Bardfield Primary School

admin@greatbardfield.essex.sch.uk 810252

Muddogs Youth Football

Tony Clarke-Holland 07710 506007

www.muddogs.co.uk/tch@thebcf.co.uk

Tuesday Club

Marilyn Edwards mazjedwards@yahoo.co.uk

Parish Priest Gt & Lt Bardfield

Fr Alex Shannon 810309/07483 878659

Catholic Priest

Fr Celestine 810428/07440 394171

Town Hall Bookings

bardfieldtownbookings@gmail.com

Refuse Collections

Gt Bardfield Tuesdays from 7.00am

Lt Bardfield Thursdays from 7.00am

Bawden Room

Every Sunday & Bank Holiday from Easter

to the end of September 2.00 – 4.00pm

Community Information Point

Thursday & Saturday 10.00am – 12.00 noon 811975

The Samaritans

01245 357357