

June
2024

50p
where
sold

News and views from Great Bardfield and Little Bardfield

Bardfield Times



Ten editions of Bardfield Times are published each year by volunteers from Great Bardfield and Little Bardfield parishes. Articles, letters, etc. for inclusion need to be received by the editors by the **14th of the month prior to publication**. The management team reserve the right to refuse, postpone or to edit any material received for publication. Views expressed in this magazine are not necessarily those of the management team.

Editor: Janet Dyson drjanetdyson@gmail.com

Layout designer: Joe Jones joe311jones@btinternet.com
07946495148

**Hand written letters
or articles for typing:** Alicia Holmes
Bunbury, Bridge Street, CM7 4SY

Advertising: advertising@bardfieldtimes.com
Kate Fox 01371 810111

Distribution: distribution@bardfieldtimes.com
Ray Coles 07470992224
& Paul Euesden 01371 810118

Treasurer: treasurer@bardfieldtimes.com
Jackie Newton 01371 810586

Announcements: nicolapascoe.announcements@gmail.com
01371 811640



Front cover: Peter Morris presenting award to the school by Linda Prior

Above: Cows were being particularly inquisitive by Paul Boon

Editorial

Our cover photo this month features Horticulturalist Peter Morris presenting Year 6 Ambassadors Jasper and Phoebe with a certificate to recognise the school's beautiful floral and artistic contributions to the recent Spring Show. Peter is President of Great Bardfield Horticultural Society and has for many years been a member of the Essex Guild of Horticultural Judges. He presented this Special Judges' Award in recognition of outstanding merit and skill shown in the exhibits. During his time as a judge this is only the fourth time he has presented this prestigious award. This is a great example of the many links between the wider community and our thriving village primary school

Another memorable event last month was the Bardfield Players' hilarious production of *In a Hole*. There was a full house every night and the audiences loved it – see review and photos on pages 16/17. Also in this issue don't miss Mac Beanland's Nature Notes on the subject of ticks and fleas. It is most informative but there may be a bit too much information for those of a squeamish disposition – you have been warned!

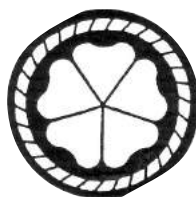


Finally, make sure you *In a Hole - Steve Hudspith and Ian Ruffle* have your say about the draft Neighbourhood Plan for the future of our village. A team of volunteers has worked hard to produce the plan, drawing on the responses to the survey which was sent to all residents, and advice and guidance from external consultants. The plan will be available for inspection from June 14th to August 2nd and there will be a Drop-in session in the Town Hall on June 15th. This is an important document which will be used to inform future planning applications so make your views count. See the Parish Council report and the enclosed leaflet (p.6) for further details.

Janet Dyson

Great Bardfield Primary School

As Summer approaches, we are thankful here at school to have so much open space for our children to enjoy. Our large field is used daily for PE lessons, sports clubs and all sorts of games at break and lunchtimes (not forgetting our two Sports Days). Our boundaries have a multitude of mature trees and shrubs which make it an ideal place for Science activities such as leaf identification and learning about the parts of trees and flowers. Our wildlife garden contains a pond, wild flowers and bug hotels which are also used to enhance our



Bug hunting on the field

learning in Science but also as a haven for all sorts of creatures to make their homes. A big thank you to Julia and Andrew Collins who recently spent a Saturday digging up stinging nettles from our pond area. What a difference it has made! Our younger children regularly use our 'forest' or 'OWLS' (Outdoor Woodland Learning School) area to support their play and exploration and we hope to have this designated area fenced off by the end of this academic year. We were very grateful to recently receive £500 from TESCO towards some equipment to use in our OWLS area and



Enjoying the blossom on the field

we are looking forward to purchasing some items from our wish list.

Alongside all of this lovely space, we have our outdoor swimming pool. In June and July each year, our children swim twice each week and benefit from our wonderful swimming teacher, Andy, who returns to Great Bardfield each year in the Summer Term. Andy not only teaches the children to perfect their different swimming strokes, but he also educates the children in water confidence and safety. It is such an important life skill to learn to swim and know how to be safe in the water and we are so fortunate to be able to offer such high quality lessons to our children. This is only possible due to the generosity of our parents who we ask to make a voluntary contribution towards these lessons for their children. Without them, as many other small schools have been forced to recently, we would have no choice but to close down our wonderful pool.

Here at school we aim to enhance our foundation curriculum with as many experiences and visits as we possibly can. Our younger children were recently treated to an African drumming workshop to link with their topic on Africa. The children had a fantastic time and got to perform their new skills to parents at the end of the day. Other activities so far this year have included a 'Great Fire of London' workshop, a visit from a Humanist speaker, fire safety talks and e-safety presentations. We are looking forward to a 'Florence Nightingale' workshop and an 'Ancient Egyptian' workshop next half term. Again, thanks to parents, we are able to provide our children



African Drumming Workshop

with these wonderful experiences which bring their learning to life.

Next week, the children will be taking part in our Sports Days. These are an opportunity for the children to shine, both individually and as part of their House Teams. Alongside the praise, medals, cups and stickers which are given for the highest scores and wins throughout the two days, it is important to remember that both winning and losing are vital skills for life. If we do not allow our children to experience the highs and lows of Sports Day in a safe environment – how will they fare in the wider world? Our PSHE and PE curriculum prepares our children for the celebratory moments of in life as well as for the more uncomfortable moments and here at Great Bardfield Primary School it is so important for us to be proud of ourselves and of each other, whatever the outcomes.

Finally, on the theme of outdoor experiences, please come and join us for our second annual Bardfest on Saturday 6th July from 3pm to 8pm. This is our main fundraising event of the year and last year was sensational thanks to our fantastic PTA. There will be live music, a bar and BBQ, swimming pool, bouncy castles and shopping stalls so please come along and support our school whilst having a great day out.

Liz Crow
Headteacher

FGBS
FRIENDS OF GREAT BARDFIELD SCHOOL PTA

Presents
BARDFEST
SATURDAY 6TH JULY 2024
3:00PM - 8:00PM
at Great Bardfield Primary School
Shop at the Bardfield Market Stalls
£4 ENTRY | under 12's go FREE!
Live Bands, DJ, Food, Bar, Kids Entertainment,
Festival Hair and Makeup, Bouncy Castle's
and more...

Great Bardfield Parish Council report

Parish Council Annual General Meeting - 8 May 2024

At this meeting, the Chair (Carolynne Ruffle) and Vice Chair (Janet Dyson) were re-elected, unopposed for a further 12 month period. Membership of committees was confirmed.

Neighbourhood Plan – Community Consultation 14 June to 2 August

Please look out for the leaflet in this edition of the Bardfield Times which will tell you more about the Community Consultation on the Great Bardfield Neighbourhood Plan. All residents of Great Bardfield are encouraged to view the Plan and make comments on it. This is very important to the future development of the Parish (the village and surrounding countryside) and the community's ability to influence this.

A team of volunteers has been working on this Plan for some time, based on community input and professional reports/consultation. This is your chance to view the draft document and to consider our objectives, planning guidelines and community aspirations. Your comments will be considered prior to submitting the final document which will have legal status, alongside national and local planning policy, for future planning applications in the Parish.

Copies of the Neighbourhood Plan document will be available to view during the Consultation Period (14 June to 2 August) at the Community Information Point next to the Town Hall, open Thursdays and Saturdays, 10am to 12 noon, and at Between The Lines Bookshop, High Street, open every day, 10am to 4pm. You may also borrow a copy for a fixed period to read in your own home.

A Drop-in Session will be held at the Town Hall, 10am – 4pm on Saturday June 15th where you can view excerpts of the Plan (or the whole thing) and discuss it with members of the Neighbourhood Plan team and our planning consultant. Please come along and see what we have been up to. Make comments online or ask for a paper copy of the comments form.

Planning Applications

- The Vine Public House – retrospective application for a single storey extension to the rear of the property. The Parish Council supported this application but requested that all health & safety considerations, design requirements and building regulations that would have been required prior to building works commencing, be properly assessed by Braintree District Council as the planning authority,
- Camellia Cottage, The Corniche – replacement of windows and

doors. No objections provided the proposed materials are considered appropriate in the Conservation Area.

Tree Works:

- The Old Brewery, High Street
- Barn rear of Bell Cottage, Bell Lane
- Hobbits, Brook Street,
- 14 Durham Close

No objections to the proposed tree works at these locations, with a reminder of the householders' responsibility not to disturb nesting birds at this time of the year.

Playingfield & Car Park

The bottle banks have now been repositioned to their original location to the left of the car park. The Parish Council are in discussion with Npower regarding the proper reinstatement of the car park and the playing field following the laying of underground electricity cables. Wet weather over the winter has meant that the surfaces are in a poor condition following this work, which was not related to the pavilion project.

Maintenance work is required in the children's play area, including replacement of seating, repair of surround to the climbing frame and replacement of bark chippings. We are currently getting quotes for this work which we hope will be undertaken before the start of the summer holidays.

Bin Collections June 2024

Tuesday June 4th - Clear Recycling Sacks & Food Bin

Green Bin (for subscribers only)

Tuesday June 11th - Grey Bin & Food Bin

Tuesday June 18th - Clear Recycling Sacks & Food Bin

Green Bin (for subscribers only)

Tuesday June 25th Grey Bin & Food Bin

Next Parish Council Meeting

Our next meeting will be held on Wednesday 12 June 2024 at 7.00pm, in the Committee Room at the Town Hall.

Carolynne Ruffle, Chairperson

CHANNEL SWEEP 2024/25

This is when it is hoped many of the cars will not be in the village in order for the equipment to sweep along the kerbs. The dates are:

**Wednesday 21 August; Thursday 21 November
and Tuesday 25 February 2025.**



Great Bardfield Primary School

PLEASE CONSIDER BECOMING A SCHOOL GOVERNOR

As a governor you will be a volunteer who makes a vital contribution to the success of our good school.

We are looking for someone with:

- **Time** - for six evening board meetings a year, day time visits, training, working parties, policy reviews...
- **A willingness to learn** - regular training and governor network opportunities provided.
- **Enthusiasm** - the roles and expectations are diverse and an ability to adapt, commit and undertake actions between meetings would be welcomed.
- **Transferable skills** - being a team player is critical, other general business skills, HR, finance, or educational insight may help, but are not essential.

For a chance to chat with other governors about what the role involves, please contact Jane Tillotson at cog@greatbardfield.essex.sch.uk

LANDSCAPE ARTIST OF THE YEAR

Great Bardfield

SAT 3RD + SUN 4TH
AUGUST 2024

12-4 PM

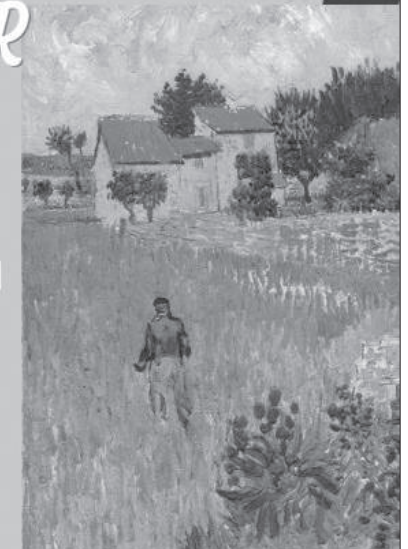
SCHOOL +
FOUNTAIN GREEN

To register your interest email -
GREATBARDFIELDLANDSCAPECOMP@GMAIL.COM

£5 Adults bring your own equipment

£1 Kids- equipment provided

All donations to Essex and Herts air ambulance
Judging to take place on both days



Town Hall Happenings

Over the first Bank Holiday weekend in May we hosted "In a Hole" a comedy performed by The Bardfield Players. Friday night was sold out (one ticket left in fact) and the other performances were almost full. The production was one of the best in recent years and enjoyed by all.

Our next event is the annual Art Show over the Bank Holiday at the end of May (26th and 27th). This is always interesting and we already have entries from our regular artists and also a few new ones.

The annual Boules competition is now in full swing. If you are competing "good luck", if you are not it's well worth watching a few games (normally early evening or weekends). It's a good opportunity to meet old friends and make new ones.

John Maidman, Chairman



Town Hall Yard: Edward Bawden



Dunmow Art Group prepares to launch 2nd NW Essex Open Studios Trail

Thursday 27th, Friday 28th, Saturday 29th & Sunday 30th June, with 21 artists taking part this year at locations across a 13-mile radius from Great Dunmow. Visitors can expect to see painting, drawing, ceramics, textiles, printmaking, willow work, woodwork, mixed media & encaustic. Refreshments are available at several studios & the opportunity to sign up to some workshops. For a downloadable brochure available via @dunmowart group on Facebook & Instagram including artists info & maps detailing the studio locations - <https://dunmowartgroup.blogspot.com/p/open-studios.html> or click on QR code

Families welcome - Parking onsite / nearby. Information contact: Jo Mayo 07522 036747



BARDFIELD HORTICULTURAL SOCIETY

SUMMER SHOW
AUGUST 3rd
2.30 – 4.30

TOWN HALL
ADMISSION £1.00
MEMBERS FREE

Raffle, Plant Stall & Refreshments

Horticultural Society

On Saturday April 27th we had our first garden visit of the year. We visited the garden of Andrew and Julia Collins at Whinbush Farm in Waltham's Cross. We were so lucky with the weather—it poured all morning and again in the evening-but we had a dry break in the afternoon for our visit. The garden was much enjoyed by over 30 of our members-so much to see and promise of so much to come later in the year. Lovely trees, shrubs and flowers- punctuated with sculptures.

Thank you Julia and Andrew for your hospitality and a warm kitchen for tea and cakes.

Special Award for Great Bardfield Primary School for their exhibit at our **Spring Show on March 23rd**. At a celebration assembly held on May 10th our president Mr Peter Morris was delighted to award a special certificate from The Essex Guild of Horticulture Judges to Great Bardfield Primary School for their outstanding exhibit at our Spring Show.

We are delighted to have such enthusiasm for our Society from the school. Several children were also awarded certificates and prizes for their individual entries.

Sadly, we have had to cancel our garden visit on **Saturday June 8th** due to circumstances beyond our control.

Our next garden visit will be to Ultingwick on **Friday September 6th** at 2pm. The garden is famous for its tulip display—we visited this in April 2021. The display is followed later in the summer by an amazing array of tender exotics and a colourful late-summer climax of dahlias. Look out for more info nearer the time.

Our Summer Show will be held on **Saturday August 3rd** in the Town Hall. We would love to welcome new and regular exhibitors and visitors. It is a great family friendly activity with classes for so many different skills and plenty of children's classes. Expect you all put more flowers and vegetables into the garden this year - so please consider entering into classes of your choice.

There are classes for flowers and floral art, vegetables and collections of vegetables and domestic-including cakes, biscuits, jams homemade wines and spirits.

The handicraft section includes the following classes

- A photograph entitled "Wild Flowers"
- Three faux flowers in a vase

- Items of textile and non-textile handicraft
- An item of any handicraft.
-

For the children under 5 years- the following classes:-

- Lolly stick figure or animal
- Decorate a paper plate
- Potato print
- A picture to colour

For the 5 years and over as above but a handwritten and decorated poem in place of Potato print

Entries to the classes is free. Entries should be registered before 10.15am and be staged by 10.30am as judging starts at 10.45am. The hall opens at 8am. The show will be open at 2.30pm until 4.30pm.

Admission £1- Members and children free.

There will be a raffle, plant and produce stall and refreshments with homemade cakes.

If you would like a schedule they are available in some of the village shops and the Blue Egg or please call Linda Prior 01371 811641 or Lynne Joyce 01371 810524

Plea for new Chairman for Society

Linda Prior has been our Chairman since 2014.

At our last AGM, she gave notice that she would be standing down from this role in October 2024. She is very happy to remain on the Committee.

If you would be interested in volunteering for this role please contact Linda who would be more than happy to tell you what is entailed.

**For any information about the Society please contact
Linda Prior 811641**

The Tuesday Club

At our May meeting we welcomed back Graham and Mary Brace, both enthusiastic travellers and passionate wildlife photographers, who talked to us about their travels around Tanzania. The photographs they shared with us were truly amazing, from lions and hippos, to exotic birds and ostriches. Their mantra is "the animals live here, we are their guests". So they respect the animals and do not disturb them, and in turn the animals are prepared to let them visit their habitat. A tip to anyone planning a safari trip though, do not get too close, do not wear bright clothing and do not wear perfume!

In June we welcome back Lindsey Barrell, who will be leading us through an interactive introduction to British Sign Language, taking us through the BSL alphabet, with tips and practical guidance. Alphabet sheets will be provided and this proves to be an interesting and perhaps useful afternoon. Lindsey is a confident and knowledgeable speaker, her talks are always light and humorous as well as informative, and we are really looking forward to her visit.

If you haven't been to a meeting yet why not join us for this one? We meet in the Town Hall on the second Tuesday of the month. Doors open at 2.00 and talk starts at 2.30. We are a friendly group, everyone is welcome, visitors pay £5 including refreshments and membership is only £25 for the whole year

Cherry Whitby

**For more details please contact the Club Secretary,
Marilyn Edwards on 01371 810555**

GREAT BARDFIELD TUESDAY CLUB

AN INTRODUCTION TO BRITISH SIGN LANGUAGE



by Lindsey Barrell

An interactive introduction to British Sign Language with factoids, tips and practical guidance.

TUESDAY, JUNE 11, 2024 at 2.30

GREAT BARDFIELD TOWN HALL

Non members of the Tuesday Club are very welcome
Visitors: £5 per talk

Review: 'In a Hole' - The Bardfield Players

The Players' recent production of 'In a Hole' by Rupert Dick was a huge success. The small cast ably directed by Sheree Reilly showed themselves to be excellent character actors. Foremost of these were Ian

Ruffle as Woody Woodward and Steve Hudspith as Benny Fleming whose perfectly timed, nerdy interactions were a delight to watch. The action centres around a large hole which has mysteriously appeared in the garden of Woody's next door neighbour. Woody and Benny are determined to get to the bottom of the mystery and plans are hatched. Later the hole inexplicably vanishes. Woody and Benny carry out meticulously



planned midnight raids over the garden fence. Meanwhile their long-suffering wives, Beth played by Niki Scripps and Sally by Margaret McCloud, report them to the local Neighbourhood Watch for a joke! The local representative, the formidable Ms Billington, played with aplomb by Carolynne Ruffle, arrives in high dudgeon in the middle of the night to investigate. Inevitably things get really complicated, a stache of stolen money is discovered, the police arrive and an arrest is made. I would not like to be cross-questioned

by Inspector Bussell, played convincingly by Sally Beanland. Out of the seemingly chaotic situation a solution emerged which left the four main characters somewhat richer! To be honest, the plot was convoluted and full of holes – I was left wondering 'Was there really a body in the



hole? And, if so Whose? How? And Why?' But this really did not matter as the pacey acting carried the story so well. It was funny and the audience loved it! If I have one quibble it is that patchy projection sometimes meant key dialogue was not audible. The set, as ever, was ingeniously constructed requiring both inside and outside spaces and upper and lower floors - an impressive achievement in the small space available, for set builders Adrian Thompson, Steve Snow, Chris Couldridge and Chris McCloud. The Players have benefitted from recent recruits to their team which clearly goes from strength to strength.

"Phoenix"



A View from the Quaker Meeting House

Who are the Quakers and what do they have to do with the genial looking fellow on the cereal boxes?

Well, very little although there was a time in our history when hats like that may have been worn. I'd like to think though that we have a bit of a 'Fire inside' as the slogan suggests.

So, what do Quakers believe?

A challenging question as any individual Friend to whom that question is put can only state with certainty what he/she believes with regard to God, faith, peace, politics or the world in general.

Among our membership there are Theist and non-Theists, there are Buddhists there are some who hold joint membership with the established Church of England and others hold no firm beliefs at all but are seeking.

Although in common with other churches we have laid down procedures for admitting enquirers into membership, unlike other churches Quakers have no sacred rites which mark us out and unite us, no ordained priesthood to guide our worship and no credal statement of faith with which we all agree

The closest we come to a 'joint statement' is a directive of our founder George Fox, that we should 'Walk cheerfully over the world addressing that of God in everyone.'

So, what holds us together, this apparently disparate group of Seekers after Truth?

Firstly, our Testimonies to Simplicity, Truth, Equality, Peace and Sustainability.

In attempting to live simply we aim to share the world's resources with others; we hold to one standard of truth in our everyday dealings with each other and the world. For this reason, most Quakers will not swear oaths. We consider all people to be equal regardless of race, ethnicity, political affiliations, disability, sexual orientation or gender. We believe that war is a contributor to poverty and inequality and is simply wrong and we work with others towards peaceful outcomes to conflict (although not all of us are pacifists,) and we try to consider the needs of our planet in working towards a sustainable future.

None of these Testimonies are exclusive to Quakers but we tend to hold each other to a higher standard in trying to live them out.

Secondly, we are held together by our practice of silent worship.

This is not an easy state to enter into; at its worst it can be difficult to settle the mind especially when the worries of the days preceding insist on accompanying you into the Meeting Room but at its absolute best it is transforming. It is a binding force in which one is aware not only of the presence of others but also of something powerful and beyond explanation. It can only be experienced. In many ways Quaker worship shares the same roots as some of the mystical practices of other churches.

There are times during the silence when a Friend may feel impelled rise to his/her feet and speak. It feels like a sudden adrenalin rush when there can be a distinct trembling of tension before you are on your feet and speaking. We are literally 'quaking' in our shoes in that moment! These words will come from the deeply gathered silence of the meeting. Sometimes they will have meaning for others, sometimes not. What is important is the sense of connectedness to something more powerful asking to be shared.

JB

NB. The practice of silent worship is not worldwide among Quaker communities. In some parts of America there are Quaker pastors who lead worship and there is also music. In Africa there are Friends churches which differ in many ways from the common perception of Quakers but who adhere to the search for peace.

HOLY SPIRIT CATHOLIC CHURCH

Braintree Road, Great Bardfield
E mail celestineiheme2016@gmail.com

Sunday Mass - 9.30 am

Weekday Services

Tuesday to Friday 9.30 am

Rosary and Holy Hour – following Friday Mass

All welcome

From the Vicarage...

Christenings are one of the most joyful duties which belong to a Vicar. With a church full of beaming family members and friends, even if the child is not so sure about the experience, it is hard not to be uplifted by the sheer joy that this celebration of new life brings. In a way, it's a shame that, for those of us baptised as infants, it's not an occasion we consciously remember. (This is a good opportunity to point out that the terms 'christening' and 'baptism' are interchangeable, and simply come from different influences on the English language.) No less profound though is the experience of baptising an adult, for whom there has often been a deep experience which has guided them to a new-found faith.

But whenever in our lives we have been baptised (or will be, because it's never too late!), because it only happens once, it's sometimes useful to make a special effort to remember what its significance was. There are certain times in the Church's year when we reaffirm promises made at baptism in our services, most notably at Easter. In the past few years though, another circumstance has meant that returning to the memory of a christening or baptism is of particular importance – namely that in the years following 2020, these celebrations were affected to a greater or lesser degree by pandemic restrictions.

For all these reasons, we have decided to have a special celebration in Finchingfield Church of all things christening-related on the Sunday following the feast of the birth of St John the Baptist, which is Sunday 30 June. As well as inviting back recently baptised children and their families, this is an opportunity for us all to think of why these events are so important: to remember our own baptism, to think about what it might mean to seek baptism, or to revisit promises made as parents or godparents. In any case, all are especially welcome to this special service (details below) to call back to mind the mystery of God's love for each one of us.

Rev'd/Fr Alex

Services for June 2024

Sunday 2 June – First Sunday after Trinity

8am Holy Communion (traditional language) – Finchingfield
 9.30am Parish Communion Service – Shalford
 10.30am Sung Communion Service – Great Bardfield
 11am Celtic Morning Prayer ('Prayer & Pilgrimage') – Wethersfield
 3pm Children's Church – Wethersfield

Sunday 9 June – Second Sunday after Trinity

8am Holy Communion (traditional language) – Shalford
 9.30am Sung Communion Service – Little Bardfield
 10.45am Communion Service – Finchingfield
 11am Family Service – Wethersfield
 5pm Sung Evensong – Shalford

Sunday 16 June – Third Sunday after Trinity

8am Holy Communion (traditional language) – Wethersfield
 9.30am Morning Prayer – Little Bardfield
 10.30am Sung Communion Service – Great Bardfield
 10.45am Family Service – Finchingfield
 5pm Evensong – Cornish Hall End

Sunday 23 June – Fourth Sunday after Trinity

8am Holy Communion (traditional language) – Great Bardfield
 9.30am Morning Prayer – Shalford
 10am Morning Prayer with Sunday Café – Cornish Hall End
 11am Family Communion Service – Wethersfield
 6pm Songs of Praise – Shalford (to conclude the Village Fete)

Sunday 30 June – The Birth of St John the Baptist (transferred)

10.30am Benefice Service with celebration of Baptism – Finchingfield

Regular Services and Events during the week

Monday 8.45am Morning Prayer – Finchingfield

Tuesday 9.15am Eucharist – Great Bardfield
 (preceded by Morning Prayer at 8.45am)

10am Baby & Toddler Group – Great Bardfield
 'St Mary's Munchkins' story & song time with refreshments

Thursday 8.45am Morning Prayer – Wethersfield

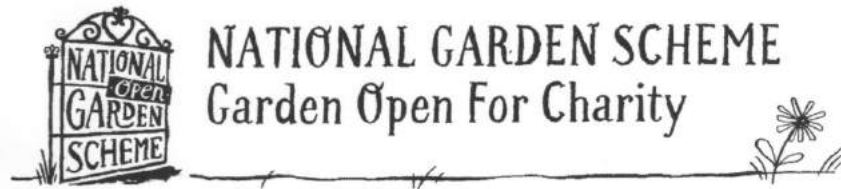
10am Prayer Group (1st, 3rd & 5th weeks)
 Coffee Morning (2nd & 4th weeks) – Shalford
 Coffee Morning (3rd week) – Cornish Hall End

0.30am Eucharist – Little Bardfield

Friday 8.45am Morning Prayer – Shalford

Saturday 10.30am (3rd weeks) Coffee Morning – Wethersfield

A short service will also be held at 1.30pm at the War Memorial in Finchingfield on Thursday 6 June to commemorate the **80th anniversary of the D-day landings.**



Brick House

The Green, Finchingfield, CM7 4JS

Saturday 29 June 2 - 6pm

Adults £6 Children free

Coffee, soft drinks, bottled water & a variety of cakes available.



More information at ngs.org.uk

GREENFINGERS

Recipe

No, not the cookery page but gardening and it is the promised remedy for the rose disease black spot. This is straight from Troy the head gardener at Sissinghurst where the organic way of growing is practised. You will need essential oils: mountain savoury, tea tree, thyme, clove and orange. Expensive but 0.2ml of each is a tiny amount so share the cost with a friend.

Add 0.2ml of each oil to 10ml rapeseed oil and 3ml of the ingredient Castalia Black Soap then mix into 1 litre of water and spray the roses every 2 weeks.

I am trying it and wish every reader success.

Jobs for June

- June is time to tidy up and shorten those shrubs that finish flowering: lilac, broom, ribes (flowering currant).
- Cut dead flowers off your plants to encourage more blooms.
- Still time to sow some annuals in any gaps, so straight on to fine soil flowers such as cosmos, marigolds and beautiful zinnia.
- Dill is a herb with ferny foliage and attractive yellow flowers, worth sowing in a pot.
- Time to spray roses with your prepared solution for better roses.





Little Bardfield Village Cricket Club
Church St, Little Bardfield, CM7 4TT

JUNIOR CRICKET

This year including new older age group!

Dates: Every Tuesday from May 14th - August 27th

Under 12's:

- Time: 6-7pm
- Cost: £30 (£1.87 per session!)

Under 15's:

- Time: 6-7.30pm
- Cost: £45 (£2.81 per session!)

All equipment provided!

THE FIRST SESSION IS FREE!

Parents/guardians must complete a registration form at the first session. Family members are welcome to stay throughout. Hot and cold drinks available from our fully licensed bar.



More info at www.lbvcc.co.uk @ contact@lbvcc.co.uk

LBVCC Juniors are proudly sponsored by



LITTLE BARDFIELD CRICKET CLUB
Fundraising Event

QUIZ NIGHT

& Chilli Supper!

Friday 28th June 2024
7.30pm for 8.00pm start
Great Bardfield Town Hall (CM74SA)
Tickets cost £12 per person (to include chilli supper)
Maximum 8 people per team
Licensed bar (cash or card payments accepted)
Prizes for winning team (and cash raffle!)

To book tickets contact: Sandra 07974682309 or contact@lbvcc.co.uk

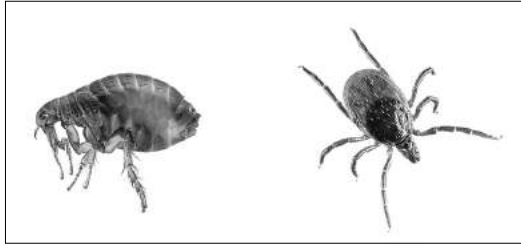
For more info: www.lbvcc.co.uk / contact@lbvcc.co.uk

Prizes sponsored by
PECK'S LANDSCAPES

Nature Notes - Ticks and Fleas

I read recently heard or read, and I can't remember where, that it could well be a bad year for ticks and fleas, I disregarded it at the time thinking I haven't got a dog anymore and after all these years I am not farming and dealing with livestock but I do think it is something worth a mention in my Nature Notes. In recent years we have seen farmers diversifying and offering glamping and Holiday pods, shepherds' huts and other rural holidays all of which are becoming very popular particularly in places like Thetford Forest, the New Forest, and the Peak District, all areas with lots of bracken heather long coarse grass. Ticks are nasty little creatures who lurk on coarse vegetation waiting for a host to brush past whom they

can latch onto. They are particularly fond of tender white skin of children in shorts but any exposed warm flesh will do. They are small spider-like creatures with six to eight legs; they attach themselves to their host with their feet which they sink into the flesh and



Left flea, right tick

start feeding on the host's blood. This often causes an itchy sensation but the first real visible sign is a round blob appearing as the tick's body blows up like a small balloon as they feed on blood. These must not be pulled or brushed off as the ticks legs will invariably break off and be left in the host and go septic. They need to be carefully removed using a proper surgical instrument which are readily available from a chemist's shop, but as always prevention is better than cure. Farmers were expected to dip annually right back into the 19th century for sheep scab and ticks. Rules all changed with a new Code of Practice in 2018 with the introduction of much safer and environmentally friendly treatments. Most responsible owners of cats and dogs do treat their pets annually, there is long list of very good treatments available but it is best to seek the advice of your vet as to the best one to use as often a resistance to certain ones can accrue. Fleas are also nasty little critters which are very common and unpleasant to say the least, again these feed on the blood of their host and cause itching and red blotches they can live in upholstery and bedding and for many years were rife on the London



underground but I believe the rolling stock is regularly treated these days. Fleas breed very quickly so if you do get the odd bite be vigilant, it could soon become much worse. Pest control operators can usually treat premises very quickly. The main problem with both ticks and fleas is not just the discomfort and inconvenience but the very real threat of them carrying and spreading very serious and fatal diseases; we must remember that fleas were the main carrier of the Bubonic Plague and can carry Weils Disease, and ticks carry Lime Disease and other nasty diseases of man and beast.

On a more cheerful and seasonable note in Shalford those of us who take a daily walk on the public foot path below the church down the side of the fishing lakes have been treated to the sight of six little newly hatched goslings taking to the water. They are quite an odd bunch of geese there are three of them that live together two Canada geese and one Pink bill, they come to nest each year. They popped up on a memory of 2018 when they had a brood of 5 goslings. They will disappear in a few days and reappear at the lakes at the top of Water Hall Lane quite a walk for six little goslings.

Mac Beanland

FINCHINGFIELD AND DISTRICT ROYAL BRITISH LEGION

The Finchingfield and District Branch of the RBL includes Cornish Hall End and the villages of Wethersfield, Shalford, Great and Little Bardfield and Great and Little Sampford.

In four years' time our branch is celebrating its Centenary and we hope to commemorate this then.

In the past our Branch activities have included Memorabilia Exhibitions in the Guildhall, Art Exhibitions with work from children of our local schools and arranging to have four silhouettes made to place on the War Memorial after its restoration which we hope will be done soon. A newsletter is produced several times a year.

Membership of the RBL is open to everyone. Please support your local Branch by:-

- Joining the RBL
- Supporting events
- Volunteering help
- Consider joining the Committee

Join the RBL at: britishlegion.org.uk

Branch Chairman: Ivan Fleming 07525 751179

Branch Secretary: Janet Ridgewell 01371 810051

Coming Events

Thursday 6 June D-Day 80th Anniversary Service around the War Memorial on Finchingfield Green at 1.30 pm.

Saturday 8 June D-Day Dance – live music from the Galaxy Big Band. Finchingfield Village Hall 7.30 – 11pm. Don't worry if you can't dance, come and listen to the wonderful music.

Tickets from: Finchingfield Post Office and Ivan or Janet (Contact details above).

FINCHINGFIELD AND DISTRICT RBL
PRESENTS
D-DAY
dance

WITH LIVE MUSIC FROM
THE GALAXY BIG BAND
SATURDAY 8TH JUNE 7.30-11PM

£20 ADMISSION | DISCOUNTED BAR | INCLUDES SAUSAGE AND CHIP SUPPER

FINCHINGFIELD VILLAGE HALL

TICKETS AVAILABLE FROM FINCHINGFIELD POST OFFICE OR CALL IVAN ON 07525751179 OR JANET ON
01371810051

Made with PosterMyWall.com

THE HUNDRED PARISHES SOCIETY

www.hundredparishes.org.uk

The Hundred Parishes includes much of the extensive barley-growing area of the Hertfordshire and Essex borders. The malting of barley in preparation for its use in the brewing industry was a significant activity in several of our larger villages and market towns, especially along the River Stort, from the 18th to the 20th centuries.

Evidence is still to be found in the form of place names indicating the location of former maltings, such as Malting(s) Lane in Much Hadham and Chrishall; and in the names of buildings that were once maltings or associated with one nearby. Thus there are a number of Malting(s) Cottage(s), as in Linton, Bartlow, Much Hadham, Aspenden and Ugley;



Great Dunmow Maltings

and Old Maltings as at Manuden, Arkesden and Great Chesterford. In Little Hallingbury there is Malting Farm and The Old Brick Malting.

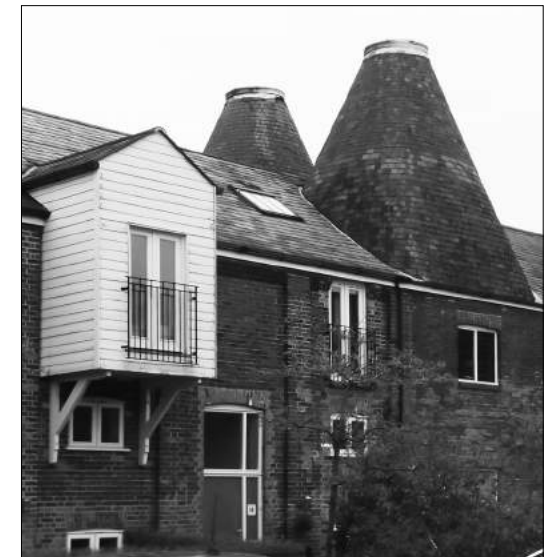
As well as conversion to private houses, surviving maltings have been renovated and converted to a variety of uses. Great Dunmow's is now a museum and community resource. In Wethersfield the maltings is now the village hall and shop, while the station maltings in Newport and those in Central Arcade in Saffron Walden are commercial premises. Multi-storey



Manuden Old Maltings

maltings in Sheering have been converted into apartments and in Stanstead Abbots to a business centre.

The classic form of a malting reflects the various processes which took place within the building. Grain was hauled in through the lucam or hoist housing at one end of the building where it was then steeped in water to start the germination process. The grain was laid out on germination floors before growth was halted



Newport Station Maltings

at a particular stage by applying heat in the kiln at the other end of the building. The process of initiating and then halting germination is known as malting.

Ken McDonald, Secretary

Advertising Section

WHIST, SOLO, BRIDGE, CANASTA

Play and/or Learn [Michael Reid 811856](mailto:Michael.Reid@811856.com)

SINGING LESSONS

Adults, Youths, Vocal work: overcoming strain.
sherikershaw.com or sherikershaw@gmail.com

ESSEX TREE STUMP GRINDING

For all your tree stump removal needs, however large or small.
<https://essextreestumpgrinding.co.uk> or (07971) 648879

NEWSPAPER DELIVERY

I have been delivering newspapers while the Co op has been closed and would like to continue this service. For more info contact
[Charlotte Glover 01799500951](mailto:Charlotte.Glover@01799500951.com) or email charlotte.glover@hotmail.co.uk

BETWEEN THE LINES

Your independent local bookshop

We offer a wide range of classic and contemporary fiction and non-fiction for all ages, plus cards, beautiful stationery and wrapping paper.

Tea and coffee served daily.

Help to support independent bookshops by using www.hive.co.uk for your online book shopping.

Open 10.00am to 4.00pm every day including weekends.

Between the Lines, The Old Post Office, High St, Gt Bardfield, Braintree, Essex CM7 4SP.
 Tel: 01371 810087 Email: booksbetweenthelines@gmail.com



Off mains sewers?
 Relying on a septic tank or sewage treatment plant?



Trust the experts to take care of your system.

With over 40 years of experience in wastewater treatment we'll keep your system running smoothly.

- Emptying and desludge
- Servicing
- Repairs
- Installation

Celebrating over 30 years installing



£40 off
 if you book your first service and empty with us - quote SAE40

Call today to book your service or free site survey
 01371 850537 info@owishall.co.uk www.owishall.co.uk

PARAGON SCHOOL OF FURNITURE RESTORATION



SHORT COURSES IN

- ◆ Furniture Restoration
- ◆ French Polishing
- ◆ Scratch Repair
- ◆ Veneering
- ◆ Chair Seating
- ◆ Oil & Water Gilding
- ◆ Gilding Restoration
- ◆ Japanning

Furniture Restoration Classes
 CALL FOR AVAILABILITY

FURNITURE RESTORATION SERVICE ALSO AVAILABLE

T: 01371 832 032 M: 07870 907 497
 email: mail@paragoncourses.co.uk
www.paragoncourses.co.uk

REVIVE Windows & Doors

Repairs and Replacements
 Local, Reliable & Highly Recommended.
 Based in Great Bardfield

Steamy windows?
 Feeling a draught?
 Temperamental door?

We can deal with all these issues and more.
 Don't just live with it, ask us for a free quote!
 Because your home, deserves the best.

Get in touch today!

07495185976
revivewindowsanddoors22@gmail.com



Working closely with several local letting agencies.

Find us on **Facebook**

Proud members of **Checkatrade.com**
 Where reputation matters

Over 35 years' experience in the trade.

Fun and Care is at the heart of everything from Scott Forbes

Forbesy Kids' Birthday Parties
"My son had an amazing birthday. From start to finish it was fantastic."

Forbesy Kids' Camps
"My kids have not stopped talking about the fantastic time they had -They miss it already! Thank you so much for taking such good care of them."

Forbesy Little Kicking Cubs
My son had THE best time on Saturday-so much fun! Great idea for preschoolers."



FORBESY CAMPS

For more information go to our website:
<https://www.scottforbesfitness.co.uk> or call: 07812 020417

Building fun memories and learning skills for life with Scott Forbes!

Those Little Sewing Jobs? Look No Further!



Friendly and locally based, please contact Lisa for a free, no obligation consultation and advice.



L9pope@gmail.com 07941 129297

- Blinds
- Cushions
- Table Runners
- Napkins
- Soft Furnishing Alterations
- Clothes Alterations



Let the oil lady look after your heating oil needs.

THE OIL LADY

SYNDICATE BUYING POWER

Heating oil for homes and fuel for commercial properties in Essex and surrounding counties. Syndicate buying saves money and we always give you our best price every time, no hassle or need to haggle. We are reducing the number of heavy goods vehicles in our tranquil villages. Why not join your friends and neighbours saving money, syndicate membership is free and with weekly orders we have low cost heating oil when you need it.

t. 01371 238080 www.theoil lady.co.uk

Croft House, Spains Hall Road, Cornish Hall End CM7 4HT e. info@theoil lady.co.uk



Do you want a clean oven? Are you too busy to spare the time?

Let Barty's Oven Cleaning Service help you

Bringing the 'sparkle' back to your appliances!

Call: 07837 294 686



Ovens • Grills • Extractors • BBQ's • Microwaves • Hobs
Ranges • Aga's • replacement bulbs and filters • Combi Ovens

THE RETREAT

Beauty and Holistic
SPA

Hidden away in the Essex countryside...



Spa Garden
Barrel Sauna
Hydrotherapy Pool
Slipper baths
Relaxation suite
Private hire



Massage
Facials
Holistic treatments
Manicures/Pedicures
Tanning/Waxing
Threading

...a haven from the bustle of daily living

Call 01371 878989
or visit
www.theretreatspa.co.uk

Taylor's

service centres

Your Local Jaguar Land Rover
Approved Service Centre



Call our friendly team today on 01371 483028.
We offer pre-bookable appointments as well
as a while-you-wait service.






Taylor's Service Centres
Chelmsford Road Industrial Estate,
Great Dunmow, Essex, CM6 1HD
www.taylorsservicecentres.co.uk

KITTEN + HARE

THOUGHTFUL HAIRDRESSING

Kids half price
tues-fri




Braintree road
Great Bardfield
cm7 4rn


Kitten and Hare is a sustainable hair salon based in Great Bardfield Essex. Founded by Husband and Wife and created with a lot of love. A family-run business with a warm atmosphere, cool interiors, and friendly personable service. This is the salon where everyone is welcome. Good vibes only.

K + H


Monday	Closed	
Tuesday	9-6	
Wednesday	9-6	
Thursday	9-6	
Friday	9-7	
Saturday	9-6	
Sunday	Closed	



01371 829864



www.kittenandhare.co.uk



@kittenandhare_

We are a sustainable, vegan-friendly salon complete with a shampoo refill point.

BARDFIELD COUNTRY INTERIORS

Decorative items for the home
Hand painted furniture
Stockist for Frenchic Paint

Iron Orchid Design, decorative transfers,
stamps and moulds
Little Greene Paint co

The Old Stores, High st, Gt Bardfield CM7 4SP
01371 810110 or 07837 606631






The Hawthorns
 BRAINTREE

WHY WAIT?

Live safe and well in a unique studio, 1-bed or 2-bed apartment at the Hawthorns, a warm and friendly all-inclusive rental retirement community for the over 70s.

"My mother-in-law moved into the Hawthorns Braintree, which is quite simply the most wonderful place for her to reside. This life-changing move has enriched our lives so much that it often brings happiness and positive emotions when we visit. The entertainment manager is a breath of fresh air and has encouraged her to attend activities. At 83 she now does Tai Chi, yoga, and bingo!"

01376 778212 | hawthornsretirement.co.uk

The Hawthorns Braintree | Tortoiseshell Way | Essex | CM7 1TD

DUNMOW ART GROUP introduces

North West Essex Artists TRAIL

OPEN STUDIOS



TH 27 - FRI 28 - SAT 29 - SUN 30

June 2024

10 - 4pm or 12 - 6pm

FREE EVENT GUIDE downloadable from MAY 15th at



Dunmowartgroup.blogspot.com
dunmowartgroup@gmail.com



All your Gardening Maintenance and Services

Patios, Fencing, Hedges, Lawncare and much more...

Call us for a free quotation on 07866899114 or find us on facebook 



One Stop Shop For All Your Cleaning Needs

We Specialise In

Office & Commercial Properties
 House Clean From £15.00 per hour
 Weekly Cleans, Fortnightly Cleans
 Spring Cleans, Rental Properties and Moving House
 Carpet Cleaning Window Cleaning Gutter Cleaning
 Fascias, Soffits & Solar Panels Roof Cleaning
 Pigeon Protection Pressure Washing, Drive Ways, Patios & Decking

Mobile 07703 388331 or 07850 060290
Office 0800 9991259
e-mail – enquires@summershine.co.uk
 Or Visit Our Web site – www.summershine.co.uk



Your family run, professional chimney sweeps!

- Chimney and Flue sweeping
- Open Fires
- Inglenooks
- Wood burning stoves
- Multi-fuel stoves
- Aga/Rayburn
- Birds Nest Removal
- CCTV inspections
- Pre-install sweeping

Any active chimney/flue (lined or unlined) should be swept at least once a year to ensure it is safe and working efficiently.

To book in or for any advice on your appliance please visit our website or contact us by phone or email.

www.srsweeps.co.uk srsweeps@outlook.com
 07518 690 544

FEETWISE
 PENNY JAMES

FOOT HEALTH PRACTITIONER & REFLEXOLOGIST

OFFERING A RANGE OF FOOT HEALTH AND SPA TREATMENTS, THERAPIES AND PEDICURES

WETHERSFIELD CLINIC 07947 364 551
 1 WEST DRIVE, WETHERSFIELD WWW.FEETWISE-PJ.CO.UK
 BRAINTREE, ESSEX, CM7 4BT PENNY@FEETWISE-PJ.CO.UK

IAN HOLMES **TOUCAN™**
 Water Softener Services WATER SOFTENERS

Suppliers & Installers of DOMEXTRA & TOUCAN Water Softeners

• Service & Repair • Filters • Taps • Salt Tablets

We are a family run business, established in 1994 by Ian & Alicia Holmes.
 Our Director, Ian Holmes, has been working in the Water Softening industry for over 30 years.

Tel: 01371 810406 E-mail: iholmeswss@aol.com

www.ianholmeswatersofteners.co.uk

SIMMONS ELECTRICAL

Ian Simmons
Local Domestic Electrician

Fully qualified electrician based in Hellions Bumpstead, serving the local area, Cambridgeshire, Suffolk & Essex.

- 24 Hr Emergency Callout
- Fault finding
- Part/Full Rewires
- Maintenance, testing and inspection
- Indoor & outdoor installations – Lights, sockets, switches
- Fuse board replacement

All aspects of electrical work carried out, installation, repair and maintenance
All work is insured and guaranteed

Mobile : 07910 708728
E-mail : ian.electrical1@gmail.com





A.KEMP GARDEN SERVICES

GARDEN MAINTENANCE & LANDSCAPING
Lawn Care Specialist, Cultivated Turf Supplied and Laid, Planting and Pruning,
also Fencing, Patios & Block Paving Driveways

For **FREE** Estimates call
ALAN on 01371 811972 or 07866 519290

Fully Insured and Qualified

Paddy McKeown



WALDEN
Sweeps

Services offered include:

- ◆ Chimney and Flue Sweeping
- ◆ Wood Burning Stoves
- ◆ Open Fires
- ◆ Aga/Rayburn
- ◆ Bird Nest Removal
- ◆ CCTV Examinations

t: 01799 599981
m: 07956 099788
e: paddy@waldensweeps.myzen.co.uk

WWW.WALDENCHIMNEYSWEEPS.CO.UK




Gainsford Hall Workshop

01787 238110




GAINSFORD END, TOPPESFIELD CO9 4EJ
gainsfordhallworkshop@outlook.com



CAR & LIGHT COMMERCIAL
VEHICLE SERVICING



AIR CONDITIONING



TYRES &
EXHAUSTS



MOT
TESTING



WHEEL BALANCING
& ALIGNMENT




GREAT BARDFIELD PRE SCHOOL

Situated within the Great Bardfield Primary School grounds, the Pre School aims to provide a friendly environment which is rich in learning experiences to encourage physical, creative, imaginative and social play.

We open for 5 morning sessions a week for Children aged 2 ½ to 4 years.

If you would like to come and see our facilities and meet our friendly experienced staff please contact the Pre School Supervisor,
Kathy King, on 01371 811580



Great Bardfield

Your **LOCAL** Estate Agent



**Valuations Sales Mortgages
Letting & Management**

www.grayandcompany.co.uk
enquiries@grayandcompany.co.uk
01371 810154





Ear Care by Sarah

All carried out by a fully qualified nurse with many years of experience. All in the comfort of your own home.

Call Sarah:
07484716464



EAR IRRIGATION £55
PRE-HEARING AID CHECK £20

R. B. GROUNDWORKS & LANDSCAPING

SERVICES INCLUDE:

- Patios - Decking - Driveways
- Fencing - Drainage
- Ground Clearance
- Mini Digger and Driver Hire

Contact Richard Beanland
Tel: 07515 631321
email: richardbean1@live.co.uk



CHIROPODIST / PODIATRIST

ANDREW MARLOW MSSCh MBChA

REGISTERED WITH THE HEALTH AND CARE PROFESSIONS COUNCIL
Treatment in the comfort of your own home.
SOME EVENING AND WEEKEND APPOINTMENTS AVAILABLE

Tel. 07754 700950
e-mail amarlowfeet@outlook.com

AD₁ WOODWORKING

Quality Cabinet Making

Competitive Prices

<i>Kitchens</i>	<i>Interior Joinery</i>
<i>Bedrooms</i>	<i>Architectural Mouldings</i>
<i>Home Office</i>	<i>Wall Panelling</i>
<i>Bookcases</i>	

Tel. Andy: 07790044007

ad1wood@outlook.com

Janus Contract Services Limited
www.januslimited.co.uk



ANIMAL FEEDS

- Horse Feed
- Pet Foods
- Beddings & Shavings
- Wild Bird Foods
- Bird Feeders
- Chicken Feed
- Free Delivery



FENCING SUPPLIES

- Field & Garden Gates
- Posts & Rails/Stakes
- Concrete Posts & Panels
- Electric Fencing
- Rabbit Netting
- Sleepers
- Delivery & Installation

Mounts Farm, Shalford Road, Rayne, CM77 6XA. (01376) 342111



Support Workers

**Do you want a job that is different every day?
Do you want opportunities to develop and progress?**

We are looking for enthusiastic and hardworking people to join our teams in Thaxted, Silver End and Cressing.

In this rewarding role, you will support young adults with autism, learning disabilities and complex behaviours to lead fulfilled and independent lives.

No experience necessary.

Benefits include competitive pay with enhanced night rates, and ongoing training program.



For an informal chat call Jade or Michelle on 01376 574150 or email: recruitment@zerothreecarehomes.co.uk



www.zerothreecarehomes.co.uk



novuscare

Care in the Heart of your Own Home

Are you or an elderly loved one looking for extra care and support at home in Bardfield or the surrounding areas? Then our local carers are here to help.

Novus Care is regulated by the Care Quality Commission and can provide a qualified carer to support your loved one in their own home from just 30 mins per week to full-time live in care.

For more information or to arrange a free assessment, please contact the Novus Care Team on:
T: 01268 960286 | E: hello@novus-care.com | W: novus-care.com

EXECUTIVE CARS

07971 972124

Airports - Theatre - Events - Days Out
Local / Nationwide
Call for a Competitive Quote
Reliable, Friendly, Local Lady Drivers



THAXTED FESTIVAL
 • EST 1916 •

21 June – 14 July 2024

A Summer of Music

Classical • Folk • Opera • Jazz



Joanna Eden's Jazz Trio



Family Concert: Sir Goward the Coward



Stevens & Pound



SUMMER 2024
 The Magic Flute, Wild Arts Opera

Discover concerts, workshops, family events & more:
thaxtedfestival.co.uk

Claire's
Mobile hairdressing

Covering Great Bardfield and surrounding areas
15 years + experience
Offering a friendly and reliable home service
protective equipment worn and equipment sterilised

Please contact Claire on
07545913853

The ROSE GARDEN
FLORIST

BEAUTIFUL BESPOKE FLOWERS FOR ALL OCCASIONS

PLEASE CALL US ON 01371 811102 OR ORDER
VIA OUR WEBSITE
WWW.THEROSEGARDENFLORISTS.CO.UK

THE BLUE EGG, BRAINTREE ROAD,
GREAT BARDFIELD, ESSEX CM7 4PY

VISIT OUR WEBSITE BELOW
FOR MORE INFORMATION
ON VISITING TIMES

BRAINTREE RD
GREAT BARDFIELD
ESSEX
CM7 4PY

SHOP | EAT | PLAY | EXPLORE

- SHOP | THE BLUE EGG
- BEAUTY SALON | BLUSH
- OUTDOOR AREA | ANIMALS AND MORE
- CAFE | KNEAD FOOD
- FLORIST | THE ROSE GARDEN
- POST OFFICE
- GARDEN CENTRE | PLANTS
- CHILDREN'S NURSERY | BARDFIELD MONTESSORI
- BOTTLE BANK

shop@theblueegg.co.uk www.theblueegg.co.uk 01371 811716

DUNMOW
IRONING PARLOUR
&
ECO-CLEANING

- Collection and Delivery Service
- We cover a large surrounding area
- Regular or one off pick ups
- Fully insured
- Wet cleaning
- Service Washes

8 Station Road Industrial Estate, Great Dunmow, Essex CM6 1XD
01371 878 399 | www.dunmowironing.co.uk



W. Hutley Ltd
GROUNDWORK & BRICKWORK CONTRACTORS
FOUNDATIONS & GROUND BEAMS.
ALL ASPECTS OF PAVING. DRAINAGE & WATER MAIN INSTALLATION & REPAIRS. DRAIN CLEARANCE. NEW SEPTIC TANKS & MAINTENANCE.

Tel: 01371 820227
Mob: 07899 958 990
whutleygroundworks.co.uk





Bell Fencing

 Equestrian  Agricultural  Commercial  Domestic

www.bellfencing.com
 enquiries@bellfencing.com | 07786 914823

Countryside
s e r v i c e s
 oil boilers • heating • tanks

- Servicing
- Breakdowns
- Commissioning
- Oil Tanks

James Yearley M: 07734 801066
 E: countryside.services@hotmail



Brook Street Butchers

www.brookstreetbutchers.co.uk 01371 810236

OPENING TIMES

TUESDAY	08:30 - 17:30	FRIDAY	08:30 - 18:00
WEDNESDAY	08:30 - 18:00	SATURDAY	08:00 - 16:30
THURSDAY	08:30 - 18:00	SUNDAY	09:00 - 15:00

**Braintree, Halstead & Haverhill
Physiotherapy
& Sports Injury Clinics**

Reduce pain & promote healing

*Evening & Saturday
appointments available*

01376 334040
21 Coggeshall Road, Braintree CM7 9DB
www.braintreephysiotherapyclinic.co.uk



Electric Websites

Affordable, award winning websites for local businesses

Whether you are selling your products or skills on the internet or you have a website that needs to be made mobile-friendly, we can help you now.

You'll be surprised how little it costs!

Call  01371 810743

Please call Simon for a friendly chat and a free quote
www.electricwebsites.co.uk



AD
FUEL OILS LTD.
Your local answer!

**NOW SELLING
LPG AND
AdBlue®**

Commercial and general public welcome with easy access for all cars and vans

Yard sales from A D Fuel Oils Ltd
Banters Lane, Great Leighs, Nr. Chelmsford, Essex CM3 1QX
Opening Hours: Monday-Friday: 8am - 5pm
Saturday: 8am - 1pm
01245 362616 • www.adfueloils.co.uk

Products available for collection or delivery:

- Petrol
- Diesel
- Kerosene
- Gas Oil/Red Diesel
- PBO
- Paraffin
- AdBlue
- LPG
- 20 litre containers
- 205 litre containers
- Barrel dispensers
- Rotary pumps
- Boiler additive
(Additive for Aga's)

• Leaflets • Posters • Menus • Desk Pads • Price Lists • Booklets • Stickers • Labels • Letterheads • Business Packs • Loyalty Cards • Invitations • Orders of Service • Compliment Slips • Business Cards • Parish Magazines • Scrap Pads • Invoices/Estimates/Contracts • NCR Sets, Pads, Books • Personal Stationery • Draw Tickets • Envelopes •

Helping capture CO₂ and plant trees



Paul Clark Printing LIMITED

This booklet was printed on Carbon Capture Paper helping to create new native woodland and capturing CO₂

01787 469628
 Email: sales@paulclarkprint.co.uk
 Web: www.paulclarkprint.co.uk
 Unit 7 Rippers Court, Sible Hedingham, Essex CO9 3PY



Planting trees to catch carbon. Planting trees to catch carbon.



Over 20 years experience as a qualified heating and plumbing engineer, based in Great Bardfield.

- New Boiler/Heating Installations and Servicing
- Boiler Breakdowns
- Bespoke Bathrooms
- Heating/Plumbing Repairs
- Rayburns
- Installation of Oil Tanks
- Unvented Systems

Contact Pete for all enquiries:

Mobile: 07790094646
 Email: pete@fittplumbing.co.uk



YOUR ADVERTISEMENT COULD BE HERE

Enquires to
 advertising@bardfieldtimes.com
 Kate Fox 01371 810111

Rothwell's Carpet Cleaning

Carpet Cleaning & Stone Floor, Upholstery, Rugs

A few points that make us stand out,

Rothwell's has been in business since 1993
 We're an honest local family firm.
 Our large truck mounted machines mean more cleaning & drying power for the best results possible.
 Members of both the NCCA and TACCA.
 We will move the furniture.
 100% satisfaction or it's FREE.
 Call Oliver and Max Campbell for expert help today.
01638 428 060
www.Rothwells.biz

It's okay not to feel okay... would it help to talk?

My name is Wendy Cummins, and I'm a qualified counsellor in your area.




Are you struggling with low mood, feeling sad, anxious, and perhaps a little overwhelmed? You are not alone and counselling may be your first step to feeling better. I can offer you a safe space to comfortably share and explore how you are feeling.

You can find me on the UK Counselling Directory under Wendy Cummins.

Please contact
 Email: wendy2104.wc@gmail.com
 Phone: 07873 802 602
 To schedule your introductory call.
 *The introductory call is free.





Martin Ball
Firewood & Timber Merchant

www.martinballfirewood.co.uk
sales@martinballfirewood.co.uk
01799 586513 01371 830503 07980 258003



**DISCOVER A
WORLD OF TREES
IN ESSEX**

Coggeshall, CO6 1TG
01376 563796





PAT QUINN
BUILDER & CARPENTER
Services

- Home Repairs, Maintenance & Renovations •Plastering •Painting •Tiling •Kitchens •Bathrooms
- Windows & Doors •Flooring & Skirting •Roofing, Tiling & Lead Work •Exterior Installations and Repairs •Decking & Pergolas •Home Offices & Sheds •All of your carpentry and general building needs

Contact Pat Quinn on 07916 232587 or pwquinnltd@gmail.com

Over 40 years of experience working as a builder and carpenter on a range of project sizes; has vast experience working on period properties.



**CARPENTRY
&
GENERAL
BUILDING**

CHRIS YARROW

Specialising in all types of carpentry;
doors, floors, stairs, bespoke
woodwork, decking, repairs and
outdoor structures

For a no obligation quote please
contact me:
M: 07872 514 779
E: chrisyarrow1976@gmail.com

T&S Building Ltd.

01371 811 295 or 07736 334203
www.facebook.com/TSBuildingLtd
trevorbrockwell@yahoo.co.uk

General Builder
New build
Renovations

Extensions, Home Improvements,
Kitchens, Bathrooms,
Wind Repairs to Roofs, chimneys and Garden Fences.

**Experience at working with
Listed Buildings.**

*Always wanted that open plan kitchen/diner?
Why not call for a free quotation
or to discuss your ideas?*

No job too small or too big.
Full public liability insurance cover.

Mercer & Hughes Veterinary Surgery



Great Dunmow
01371 872836

5-6 Chelmsford Road Ind. Estate
Great Dunmow CM6 1HD

Saffron Walden

01799 522082
14 Radwinter Road
Saffron Walden
Essex CB11 3JB

Stansted

01279 813780
80 Cambridge Road
Stansted Mountfitchet
Essex CM24 8DA

Braintree

01376 743893
175 - 179 Church Lane
Bocking Braintree
Essex CM7 5SG



24HR EMERGENCY SERVICE



www.mercerandhughes.co.uk

Bird on a wire

ELECTRICIAN From A Loose Wire To A Full Re-Wire

Domestic Electrical Services

- Fault finding
- Electrical repairs
- Consumer units
- New circuits
- Inspection and testing
- Heating control systems
- Smart wiring systems

Call: 01371 811618

Mob: 07882 039960

www.birdonawire.net

CERTIFIED INSTALLER

GREAT BARDFIELD TOWN HALL



Town Hall Yard: Edward Bawden

Bookings

bardfieldtownbookings@gmail.com or telephone **07368 503459**

For private parties, social activities, exercise classes, meetings.

Excellent facilities, including spacious kitchen and catering equipment, sound system, projector and screen with hearing loop, free fast Wi-Fi, stage and meeting rooms.



Call for new members!



The Bardfield Players was **established in the 1920's** - but has been managed very successfully by Ian Ruffle since 1999.



We are award winning members of the North Essex Theatre Guild and our aim is to put on two productions per year—normally May and November.

We have several opportunities for:

- **Set Builders**
- **Costumes/Make-up/Hair**
- **Stage Management**
- **Actors—all abilities welcome!**



We would be delighted to hear from you—come and be part of our friendly and dedicated troop.



For more information contact:

Ian Ruffle. T: 07980 960082

E: ian.ruffle@gmail.com



Great Bardfield Town Hall



THAXTED STOVES & FIREPLACES

Beat the fuel crisis and stay warm for less this winter

NEW SHOWROOM NOW OPEN

THAXTED STOVES
FOR ALL YOUR WOOD BURNER REQUIREMENTS
www.thaxtedstoves.com

WOOD FIRED HOT TUBS...
Fireplaces...
Stoves...
Garden Fireplaces etc...

THAXTED STOVES
www.thaxtedstoves.com
LR67 KTV

Complete installation service from start to finish

Visit us, browse & get advice:
2 Wrights Yard, Wimbish,
Saffron Walden CB10 2XJ

thaxtedstoves.com
01799 599333
info@thaxtedstoves.com

ROE ENVIRONMENTAL LTD

Working for the Environment

Family Run Business since 1953

ROE ENVIRONMENTAL LTD
TEL: 01621 740704 / www.roeenv.co.uk

Domestic services offered:

- Septic Tank, Cesspool & Treatment Plant emptying.
- Drain blockage clearance
- Pump repairs and replacements
- Treatment Plant installation
- Servicing and maintenance
- Drain CCTV surveys and inspections
- Replacement Manhole lids / covers
- Emergency response 24/7

Please take photo of me and keep on your phone

FORS
ACHILLES
UVDB Verify

Fleet Farm, Fambridge Road, North Fambridge, Chelmsford, Essex CM3 6NB
T: 01621 740704
E: enquiries@roeenv.co.uk www.roeenv.co.uk

CODE: ROE011



KEEP GROWING

SOCIAL AND THERAPEUTIC HORTICULTURE PROJECT
Bardfield Vineyard and Great Lodge Garden

The KEEP GROWING project supports adults with mental health issues using gardening and working on a vineyard in a beautiful rural setting. It is free of charge.

- ◆ Improve mental and physical wellbeing
- ◆ Learn new skills in a structured and supportive environment
- ◆ Improve confidence and self-esteem
- ◆ Reduce loneliness and isolation
- ◆ Manage stress and anxiety
- ◆ Meet new people



There is the opportunity to take part in the following:

- ◆ Gardening tasks
- ◆ Vineyard tasks
- ◆ Craft activities
- ◆ Nature walks
- ◆ Alpaca feeding

For further information and to join the project please contact:
Rebecca Jordan on 01371 810776 or
Claire Griffiths on 07983 823388
Email: rebecca@greatlodge.co.uk
Bardfield Vineyard and Great Lodge Garden
Great Bardfield, Braintree, CM7 4QD

Project takes place every Wednesday morning 09:30-12:30, refreshments provided

SCALE INVADER



Are you constantly battling with limescale?

Here's the solution

www.scaleinvader.com
07906891667
info@scaleinvader.com

- ✔ Reduces limescale
- ✔ No maintenance, no power
- ✔ Saves money on electric/gas bills
- ✔ Just fit & forget
- ✔ Easy to install
- ✔ Money back guarantee
- ✔ No cutting of pipe work

PLUMBING AND HEATING

- ✔ Central heating installation and maintenance
- ✔ Oil boiler installation, service and repair
- ✔ Oil tank replacement
- ✔ Unvented cylinder installation service and repair

Call P Burton on: 07906891667



MAN ABOUT THE HOUSE



**HIGH STANDARD OF WORK ON
PERIOD AND MODERN HOMES**

Painting & Decorating
Woodwork & Plastering
Gutters Repaired or Replaced
Fencing and
Much, Much More

CONTRACTS OR ONE OFF JOBS
PLEASE TELEPHONE 07783 066326

*Food Trucks coming
soon to ...*



Great Bardfield

Thu 6th Jun
The Noodle & Dumpling Bar

Sun 9th Jun
The Rolling Deli

Thu 15th Jun
Trott & Whinny (Burgers)

Sat 15th Jun
Gustul De Acasa (Transylvanian Food)

Fri 21st Jun
My Thai Chef

Sat 22nd Jun
Papa's Locas (Loaded Fries)

Sun 25rd Jun
The Rolling Deli

Sat 29th Jun
Nola Bayou Kitchen (Smoked Meats)

And many more to be announced...

Want to have your food truck at the The Bell Inn?

Please email us on bellinnessex@gmail.com or call 07539949529

THAXTED BUILDERS LTD

Est. 1966



Carpentry & Joinery - Brickwork - Lime Plastering
Roofing - Restorations of Listed Building
New Build - NHBC Registered

Phone: Robert Johnson 07802 414 051
Email: thaxtedbuilders@aol.com

R & D Painting and Decorating Service

Call mobile 07501 968205
or Email robertcandler@aol.com

Free quotes, no job too small

Robert Candler



Call IAN TIMOTHY on 01223 892027



OIL AND GAS BOILER ENGINEER

CORGI



REGISTERED

CENTRAL HEATING MAINTENANCE & REPAIR SERVICE
FOR ALL YOUR GAS & OIL BOILERS ALSO RAYBURNS



Kevin Wade - Tree Surgeon

Telephone 01371 810035

Mobile 07812 984875

R. Wheeler



Roofing Services

TILING SLATING LEADWORK GUTTERING
FLAT ROOFS REPAIRS

Home: 01371 811308

Mobile: 07951 349837

Free Estimate All Work Guaranteed
25 Years Experience

BLOCKED DRAINS?

We are a father & son drainage company specialising in
Blocked Drains • CCTV Surveys
• All Blockages Carried Out
• Underground Drain Repair • Patch Repair.
Local Water Authority Approved
• 24 Hour Service • 35 Years Experience


Call Andy Cleminson: 07956 665272



• PLUMBING
• KITCHENS
• BATHROOMS
• PLASTERING

Julian Peer
OLD COTTAGE
BRICK KILN GREEN • BLACKMORE END • CM7 4DT
jpeer2@hotmail.co.uk
M: 07814 996256


EASTERN GARAGE



WETHERSFIELD ROAD - FINCHINGFIELD
01371 810238
e-mail info@easterngarage.net

Most Makes of Car Serviced and Repaired by our Highly Experienced Staff
While - U - Wait Services - MOT with FREE re-test
FREE checks of Tyres, Batteries and Exhausts
FREE Accident Repair Estimates
FREE local Collection and Delivery of Vehicles
Spare Parts for Most Vehicles Available
24 Hour Breakdown and Recovery service

MAKE THE MOST OF YOUR LOCAL GARAGE



Oreon
The Upholstery Specialists



Modern & Antique Upholstery
Makers of Bespoke
Upholstered Furniture
Curtaining & Loose Covers

3 The Mazes, East Street, Braintree, Essex, CM7 3JJ
Tel/Fax 01376 346585

BARDFIELD QUAKER MEETING HOUSE

Brook Street, near the War Memorial



MEETING FOR WORSHIP SUNDAYS 10.30am
A Quaker meeting is based on silent contemplation and can be an oasis of quiet in a busy week. Everyone is welcome to join with us. Afterwards a chance to chat over tea or coffee.

CONSIDER HIRING THE BUILDING
Use the newly arranged kitchen or excellent patio area.
For more information contact Sue Collins and Mike Collins 01371 830457



BELLRINGING

Learn to ring the *world's biggest musical instrument!*

- Free Lessons
- All-Weather Community Activity
- Centuries-Old British Skill
- Multi-Generational Friendships
- Adults & Children (10yrs+) Welcome

Find out more:
BardfieldBellringers@gmail.com
01371 810209 or 07795 280647

Begin a new *physical, mental, & technical* challenge today!

Mobile Library stopping in Dunmow Road on the following dates in 2024

13 June; 4 July; 25 July; 15 August; 5 September; 26 September; 17 October; 7 November; 28 November; 19 December
Between 11.10am and 11.40pm

VILLAGE CHANNEL SWEEP 2024/25

BDC WILL VISIT THE VILLAGE ON
WEDNESDAY 21 AUGUST, THURSDAY 21 NOVEMBER
AND TUESDAY 25 FEBRUARY
TO CARRY OUT THIS WORK

Jaggar

ACCOUNTANTS

A friendly and forward-thinking accountants, based in Great Bardfield

Our Services

Each business is unique in their requirements and needs so our services can be tailored to cover all that you need

- ✓ Year-end Accounts Production
- ✓ Business Tax Returns
- ✓ Personal Tax Returns
- ✓ VAT Returns
- ✓ Payroll
- ✓ Bookkeeping
- ✓ Management Accounts
- ✓ Business Support & Advice



jaggaraccountants.co.uk

hello@jaggaraccountants.co.uk
01371 532355



the GREAT
BARDFIELDcharities
Charity number 207305

CAN WE HELP YOU?



If you live in Great Bardfield, are a group or organisation benefitting Great Bardfield residents then you are eligible to apply for financial assistance.

For more information please contact one of the Trustees:
Pat Coles (01371 810995), Debbie Rogers (01371 811083)
Mick Gell (01371 810113), Nick Holland (07795 280647)
Annika Woodcock (07900 491636)
Rev Alex Shannon (01371 810309)

Or email GreatBardfieldCharities@gmail.com

TOWN HALL DIARY

June 2024

Saturday 1 st	Private Function	10.00am
Tuesday 4 th	Dance fit class	9.30am
	Mobility class	10.45am
	Choir	8.00pm
Wednesday 6 th	Badminton	7.00pm
Friday 7 th	Cinema Club	7.00pm
Tuesday 11 th	Dance fit class	9.30am
	Mobility class	10.45am
	Tuesday club	2.00pm
	Choir	8.00pm
Wednesday 12 th	Parish Council Meeting	7.00pm
	Badminton	7.00pm
Saturday 15 th	Neighbourhood Plan	
	Consultation	10.00am to 4.00pm
Tuesday 18 th	Dance fit class	9.30am
	Mobility class	10.45am
	Choir	8.00pm
	Badminton	7.00pm
Wednesday 19 th	Badminton	7.00pm
Tuesday 25 th	Dance fit class	9.30am
	Mobility class	10.45am
	Choir	8.00pm
Wednesday 26 th	Badminton	7.00pm
Friday 28 th	Little Bardfield Cricket Club Quiz	7.30pm

For private parties, social activities, exercise classes, meetings.

Excellent facilities, including spacious kitchen and catering equipment, sound system with hearing loop, free wifi, stage and meeting rooms.

Enquiries and bookings
bardfieldtownbookings@gmail.com

**Great Bardfield Parish
 Clerk to the Parish Council**

Councillors clerk@greatbardfield-pc.gov.uk 810111
 Carolynne Ruffle (Chair) 810986
 Paul Kennedy 810540
 Darren Hockley 810836
 Peter Walmsley 07843 498253
 Lynsi Hayward-Smith 07515 398402
 Janet Dyson 07957 483207

Braintree District Council
Councillors Cllr Michael Staines
Cllr Mark Ault 07922 487666
Police 07963 744481

for non-emergency enquiries dial 101
 for emergency enquiries dial 999

**Little Bardfield Parish
 Chairman of the Parish Council
 Clerk to the Parish Council**

LittleBardfieldParishClerk@gmail.com
 Andrew Davies davies@farmline.com
 Kate Rixon 01371 404 321

**Uttlesford District Council
 Councillor**

LittleBardfieldParishClerk@gmail.com
 Cllr Mike Tayler
 cllrtayler@uttlesford.gov.uk

Bardfield After School & Breakfast Club
Bardfield Carpet Bowls Club
Bardfield Charities
Bardfield Players
1st Finchingfield Scout Group

Pat Moore 07767 413055
 Clifford Richardson 810782
 Nick Holland 07795 280647
 Ian Ruffle 810986

Muddogs Youth Football

Mark Wells 810447
 mark.2millside@btinternet.com

**Gt Bardfield Primary School
 Gt Bardfield Pre-School
 Gt Bardfield Allotments**

Tony Clarke-Holland 07710 506007
 www.muddogs.co.uk/tch@thebcf.co.uk
 admin@greatbardfield.essex.sch.uk 810252
 Kathy King 811580

**Gt Bardfield Historical Society
 Horticultural Society**

jonathan6davies@gmail.com
 tim_regan82@hotmail.com

**Parish Priest Great & Little Bardfield
 Catholic Priest
 Town Hall Bookings
 Tuesday Club**

Linda Prior 811641
 Fr. Alex Shannon 01371 810309/07483 878659
 Fr Celestine 810428
 bardfieldtownbookings@gmail.com

**Great Bardfield Bell Ringers
 Refuse Collections**

Marilyn Edwards mazjedwards@yahoo.co.uk
 Nick & Sarah Holland 810209

Mobile Library

Gt. Bardfield Tuesdays from 7am
 L. Bardfield Thursdays from 7am

Museum and Cage

Little Bardfield, Styles, Thurs 10am fortnightly
 Gt Bardfield Town Hall, Thurs 11.15am fortnightly
 Every Saturday, Sunday & Bank Holiday from
 Easter to the last Sunday in
 September 2-5.30pm.

**Community Information Point (CIP)
 The Samaritans**

Thurs and Sat 10am -12 noon 01371 811975
 01245 357357



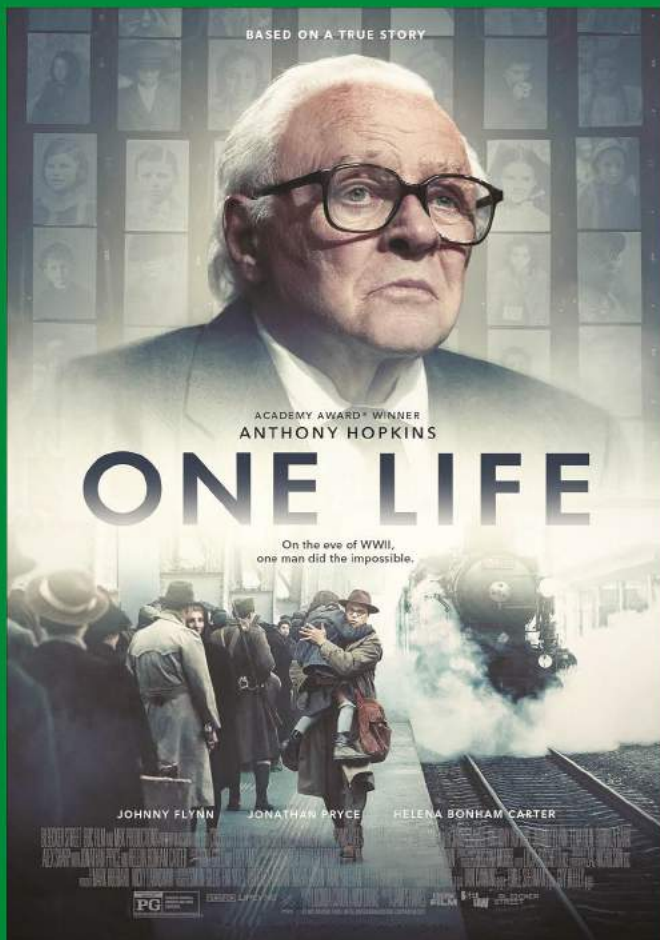
Bardfield Cinema Club

Friday, June 7th

Great Bardfield Town Hall

Doors Open 7.30pm Film Starts 8.00pm

Members free, Non members £7



BARDFIELD CINEMA CLUB - FRIDAY 7TH JUNE